

2026

BEHAVIOUR ANALYSIS HANDBOOK

SCHOOL OF PSYCHOLOGICAL AND SOCIAL SCIENCES



THE UNIVERSITY OF
WAIKATO
Te Whare Wānanga o Waikato



Contents

PROGRAMME STAFF.....	4
PROFESSIONAL ORGANISATIONS.....	6
BEHAVIOUR ANALYSIS.....	7
APPLICATIONS OF BEHAVIOUR ANALYSIS.....	7
CAREERS IN BEHAVIOUR ANALYSIS	8
PRACTICAL EXPERIENCE IN ABA	9
BEHAVIOUR ANALYSIS AT THE UNIVERSITY OF WAIKATO	9
RESEARCH IN BEHAVIOUR ANALYSIS AT THE UNIVERSITY OF WAIKATO	9
UNDERGRADUATE COURSES IN BEHAVIOUR ANALYSIS	11
SUGGESTED ACADEMIC PATHWAY FOR REGISTRATION AS A PSYCHOLOGIST IN BEHAVIOUR ANALYSIS	12
QUALIFICATIONS INCLUDING UNDERGRADUATE COURSES IN BEHAVIOUR ANALYSIS FOR GRADUATES IN SUBJECTS OTHER THAN PSYCHOLOGY	13
POSTGRADUATE QUALIFICATIONS THAT CAN INCLUDE BEHAVIOUR ANALYSIS	14
DOCTORATE IN PHILOSOPHY PROGRAMME (PHD) IN BEHAVIOUR ANALYSIS	15
POSTGRADUATE PROGRAMME OVERVIEW	16
MASTER OF APPLIED PSYCHOLOGY IN BEHAVIOUR ANALYSIS - MAPPPSY(BA)	17
SUMMARY OF MAPPPSY(BA) DEGREE STRUCTURE *	18
MAPPPSY(BA) ENTRY REQUIREMENTS	18
ENTRY INTO YEAR 2 OF A MAPPPSY(BA) PROGRAMME FOR THE ONE-YEAR DEGREE REQUIRES:	18
MASTER OF PROFESSIONAL PRACTICE IN BEHAVIOUR ANALYSIS - MPPBA.....	20
MPPBA DEGREE REQUIREMENTS	20
SUMMARY OF MPPBA DEGREE STRUCTURE*	21
MPPBA ENTRY REQUIREMENTS	21
CORE 500 LEVEL COURSES.....	23
ELECTIVE COURSES.....	24
APPLYING FOR ENTRY FOR THE MAPPPSY(BA) AND MPPBA.....	25
POSTGRADUATE DIPLOMA IN THE PRACTICE OF PSYCHOLOGY (APPLIED BEHAVIOUR ANALYSIS) - PGDIPPRACPSYCH(ABA)	26
PGDIPPRACPSYCH(ABA) STRUCTURE.....	27
CORE COURSES FOR PGDIPPRACPSYCH(ABA).....	27
PGDIPPRACPSYCH(ABA) ENTRY REQUIREMENTS.....	28
APPLYING FOR ENTRY INTO THE PGDIPPRACPSYCH(ABA)	29
APPROPRIATE CLIENTS AND PLACEMENTS.....	30

Programme Staff

Psychology staff profiles can be accessed here: [Psychology staff](#)



Associate Professor Tim Edwards

Senior Lecturer

tim.edwards@waikato.ac.nz

[Staff profile](#)

Tim Edwards is a behavioural psychologist who is interested in learning processes, particularly as they relate to socially significant behaviour.



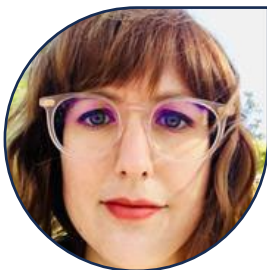
Dr Rebecca Sargisson

Senior Lecturer

rebecca.sargisson@waikato.ac.nz

[Staff profile](#)

Dr. Rebecca Sargisson is a Senior Lecturer in Psychology at the University of Waikato, based on the Tauranga campus. A dual New Zealand and Dutch citizen, she spent 2 years in a research and teaching position at the University of Groningen from 2018 to 2020.



Dr Amarie Carnett

Senior Lecturer

amarie.carnett@waikato.ac.nz

[Staff profile](#)

Dr. Amarie Carnett is a Senior Lecturer in the Behaviour Analysis programme, and a Research Affiliate at Victoria University of Wellington. She is a doctorate level Board Certified Behavior Analyst (BCBA-D). She has over 15 years of experience working in the field of behavioral science and Autism/Developmental Disabilities.



Dr Angelika Anderson

Teaching Fellow

angelika.anderson@waikato.ac.nz

[Staff profile](#)

Angelika was previously the director of the behaviour analysis programme and is the coordinator of a Verified Course Sequence (VCS).

She will be with the Behaviour analysis programme until December 2024.



Dr Tania Blackmore

Lecturer

tania.blackmore@waikato.ac.nz

[Staff profile](#)

Tania is currently Senior Tutor with the School of Psychological and Social Sciences. Her primary interests are applied behaviour analysis, where her behavioural research has involved adapting operant conditioning techniques to investigate psycho-physics (colour vision), reversal learning and maze learning in large animals. Her other primary interest is psycho-oncology.



Victoria Burney

Senior Tutor

victoria.burney@waikato.ac.nz

Victoria is a Registered Psychologist (NZPB) and a Board-Certified Behaviour Analyst (BCBA) who graduated from the University of Auckland Applied Psychology Programme in 2013.

Victoria works part time in clinical practice, currently in the area of paediatric brain injury rehabilitation. Previously, Victoria worked as a psychologist/behaviour analyst in Canada and the Netherlands, with clinical focus in areas including: autism intervention and other developmental disabilities, intervention with challenging behaviour, support for young people with additional educational needs or engaging in school refusal, and guidance for families /school teams/other adults supporting young people.



Tina Bourke

Senior Tutor

tina.bourke@waikato.ac.nz

[Staff profile](#)

Tina is currently a Senior Tutor based at the Tauranga campus. Tina teaches across a range of undergraduate and post-graduate level psychology papers. Tina's primary interest is applied behaviour analysis (ABA).



Donna Walsh

Programme administrator

behavioural.psychology@waikato.ac.nz

Donna is a Programme administrator with the School of Psychological and Social Sciences. She works directly with the Behaviour analysis and Community Psychology programmes.

Professional organisations

New Zealand Psychologists Board (NZPB) - <https://psychologistsboard.org.nz/>

Society of Behaviour Analysis Aotearoa New Zealand (SBAANZ) -
<https://societyofbehaviouranalysis.co.nz/>

Association of Professional Behaviour Analysis (APBA) - <https://www.apbahome.net/>

Association for Behaviour Analysis International (ABAI) -
<https://www.abainternational.org/welcome.aspx>

Behaviour Analysis

Behaviour analysis is a scientific approach to understanding why people and animals do what they do. Studying behaviour analysis will teach you how behaviour is affected by events in the social and physical environment and what you can do to produce behaviour change to help improve lives. Knowledge of this science of behaviour and its behaviour-change technology will assist you in a variety of careers.

As a field, behaviour analysis consists of concepts, principles, and techniques. As a student of behaviour analysis, you will learn how behaviour can be understood and changed. This includes an introduction to behaviourism, which is the philosophy underpinning the science of behaviour, and the experimental analysis of behaviour (EAB), which is the domain of basic behavioural research. Applied behaviour analysis (ABA) is concerned with the application of these foundations and in the development of a technology to improve

socially important behaviours. You will learn many skills, including how to define and measure behaviour, create behaviour change programmes, and evaluate their effectiveness in courses that combine theoretical and practical learning to produce marketable skills.



Applications of Behaviour Analysis

Applied behaviour analysis (ABA) is the application of behaviour-analytic principles to improve socially important behaviours. ABA is used in many settings and with a wide range of problems. Many effective and evidence-based procedures and interventions to addressing problem behaviour, and therapy supporting individuals with developmental disabilities are based on ABA.

ABA can be used to help people gain new skills, reduce unwanted behaviours, or prevent problem behaviour starting in the first place. ABA is useful in many domains including, for example, organisational behaviour management (OBM) and ecological interventions (e.g., reducing littering, increasing recycling behaviour, addressing climate change).

Careers in Behaviour Analysis

Some students study behaviour analysis to apply their knowledge and skills to human problems, and to do work based on behaviour principles in an applied setting or to undertake research in these areas. Others study it to work with animal behaviour; they may be interested in research or in animal problem behaviours or animal training. Some combine both research and practice and/or the study of animal and human behaviour.

For whatever reason you are considering taking courses in this area, the behavioural courses and programmes will provide you with knowledge which you can use to understand, study and work practically with behaviour. An understanding of how and why behaviour occurs and how it can be changed for the better is of fundamental value to almost all professions. Depending on your specialty, you may work in a range of settings (including research institutions, private practice, schools, special education settings, universities, health services, business and industry, and governmental agencies), and with a range of populations (including families, people with psychological problems, children with challenging behaviours, individuals with special needs, teachers, people and their pets, and others seeking positive behaviour change).



Students who have specialised in the application of behaviour analysis to human issues and clinical problems are working in the community, in the disability sector, mental health, and in early intervention, or in educational settings with individuals with a wide range of diagnoses and disabilities, including autism spectrum disorder, conduct disorder, and attention deficit hyperactivity disorder.

However, it doesn't matter what type of psychology you choose to practice, or whether you end up in a field orientated to people or animals. What is important is that you gain an understanding of how and why organisms behave (i.e., what maintains and influences behaviour).

Practical Experience in ABA

Many students pursuing careers involving the application of behaviour analysis gain practical experience alongside their undergraduate and graduate studies. This can be voluntary or paid, such as support work. In addition, experience can sometimes be gained working for parents or trusts who employ students specialising in ABA to work with their children, helping to implement programmes for them.

The graduate programme includes training in the skills required to work practically, applying behaviour analytic principles to behaviour change with humans. The postgraduate programme provides supervision and training for students who are completing internships to become registered psychologists in NZ and Australia (please see the Ahpra website for further information regarding registration in Australia). It also delivers the curriculum required for full membership with the Society of Behaviour Analysis Aotearoa New Zealand.

Behaviour Analysis at the University of Waikato

The undergraduate, graduate, and postgraduate courses in behaviour analysis provide training in the experimental analysis of behaviour, applied behaviour analysis, and the philosophical underpinnings of behaviour analysis.

The undergraduate courses can be taken on campus in Hamilton or Tauranga. Postgraduate courses can be taken on campus in Hamilton or online as part of an Honours degree, a Postgraduate Diploma in Psychology, the Master of Professional Practice in Behaviour Analysis, or the Master of Applied Psychology in Behaviour Analysis.

The Postgraduate Diploma in the Practice of Psychology in applied behaviour analysis is a post-masters or post-doctorate qualification that is designed to provide the requirements for registration as a psychologist in NZ, specialising in the application of behaviour analysis. It provides the supervised practical experience required for registration as a Psychologist in NZ.

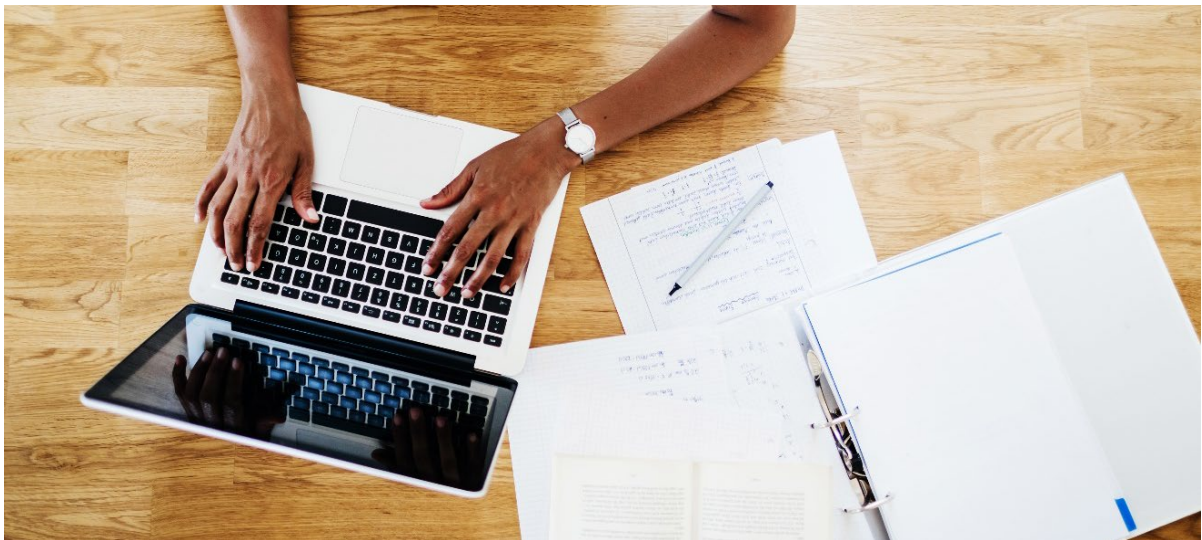
Research in Behaviour Analysis at the University of Waikato

The University of Waikato is involved with both experimental and applied research in behaviour analysis. This research is aimed at advancing the understanding of behaviour. It includes the application of psychological principles to behaviour problems. Many of the advances in behavioural therapies have their basis in laboratory research. Some of the research has a direct crossover between the experimental analysis of behaviour and the applied analysis of behaviour, such as in the areas of reinforcement procedures, reinforcer preference, extinction, self-control, and stimulus generalisation.

Research in behaviour analysis includes the study of learning and of the application of behaviour principles to understanding and changing human and animal problem

behaviour, health-related behaviour, developing communication skills, providing behaviour support for people with disabilities, improving educational practices, and animal training. Current research includes applied research projects examining scent detection with dogs, and research on complex human behaviour, including perspective taking and problem solving. There are also ongoing projects examining the application of behavioural interventions to improve educational and developmental outcomes.

Theses have included topics related to dealing with challenging behaviour, teaching adaptive and functional communication skills to vulnerable populations, and exploring the use of technology to facilitate behaviour change and increase independence in learners.



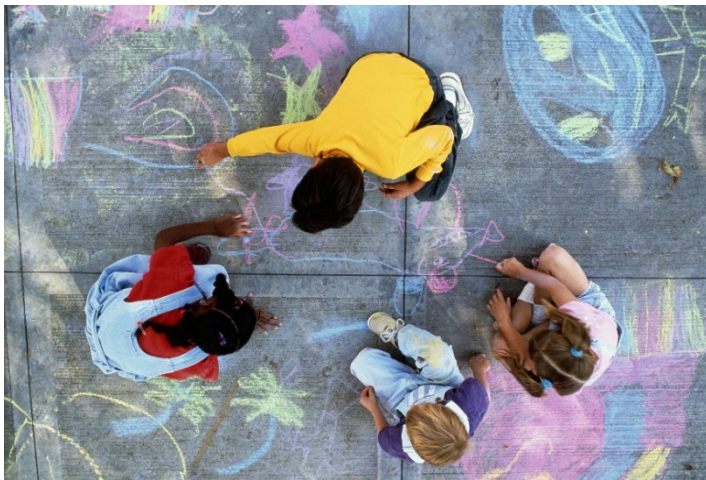
Undergraduate Courses in Behaviour Analysis

Students who wish to study behaviour analysis at The University of Waikato at undergraduate level should complete a BA, BSc, or BSocSc with a major in psychology and should include:

PSYCH100 HAM and TGA	15pts	Brain, Behaviour and Cognition
PSYCH204 HAM and TGA	15pts	Learning and Perception
PSYCH211 HAM and TGA	15pts	Understanding Psychological Research
PSYCH307 HAM and TGA	15pts	Psychological Research Methods
PSYCH314 HAM, TGA and NET	15pts	Behaviour analysis

Depending on the area of their interests, students should consider including:

PSYCH319 HAM and TGA	15pts	Infant and Child Development
PSYCH337 HAM and TGA	15pts	Individual Differences and Measurement
PSYCH338 HAM and TGA	15pts	Mental Health and Wellbeing



If interested in working in educational settings, then students should consider including courses related to education in their degree. A double major in psychology and education could be considered by students wishing to work in special education or in other educational settings.

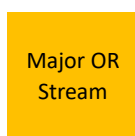
If interested in animal behaviour, students should consider relevant papers in biological sciences in their degree. A double major in psychology and biological sciences or a minor in animal behaviour could be considered by students wishing to work in animal behaviour.



Suggested academic pathway for registration as a psychologist in Behaviour Analysis

Please note: This document is designed to show you a Bachelor of Arts/MAppPsy/PGDipPracPsych pathway in Behaviour Analysis only – please consult ALPSS Student services to plan your specific undergraduate degree (Bachelor of Arts, Bachelor of Social Sciences). Please consult HECS Student services to plan your specific undergraduate degree – Bachelor of Science

BA	Y1 120 points	PSYCH 100	PSYCH 101	One from List A	ARTSC110 Old Worlds-New Worlds	Field of the Degree 100 level	Field of the Degree 100 level	Elective	Elective
	Y2 120 points	PSYCH 211	PSYCH 204	PSYCH COURSE 200 level	One From List B	Field of the Degree 200 level	Elective	Elective	Elective
	Y3 120 points	PSYCH 307	PSYCH 314	PSYCH COURSE 300 level	PSYCH COURSE 300 level	PSYCH301 Research Assistantship	Elective	Elective	Elective
MAppPsy Year 1	Y4 120 points	PSYCH 538	PSYCH 560	PSYCH 561	PSYCH 577	Elective course 500 level	Elective course 500 level	Elective course 500 level	Elective course 500 level
MAppPsy Year 2	Y5 120 points	PSYCH 594							
PGDipPracPsych (ABA)	Y6 120 points	PSYCH 551			PSYCH 552		PSYCH 553		

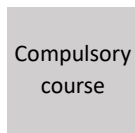


A major or stream is the main subject of your degree.



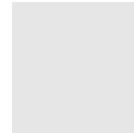
Elective course

You may have room in your degree to take courses that aren't part of your major or compulsory for your degree. These are called elective courses. Electives can be from any subject offered by the University.



Compulsory course

All of these courses must be taken as part of your degree.



Other courses which are part of the degree – Please consult the ALPSS Student Services team to fully plan your degree.

Qualifications including undergraduate courses in Behaviour Analysis for Graduates in subjects other than Psychology

Students who already hold a bachelor's degree in a subject other than psychology may include the behaviour analysis undergraduate course and the suggested courses (outlined above) as part of a:

Graduate Diploma in Psychology - GradDip(Psych)

<https://www.waikato.ac.nz/study/qualifications/graduate-diploma>
to gain entry into the postgraduate qualifications.



Postgraduate Qualifications that can include Behaviour Analysis

Graduate and postgraduate courses in behaviour analysis can be taken separately or as part of a specialist qualification. Students wishing to include some behaviour analysis courses in their postgraduate qualification may take them as part of one of the following one-year postgraduate programmes:

- [Postgraduate Certificate in Psychology - PGCert\(Psych\)](#)
- [Postgraduate Diploma in Psychology - PGDip\(Psych\)](#)
- [Bachelor of Social Sciences with Honours - BSocSc\(Hons\)](#)
- [Bachelor of Arts with Honours – BA\(Hons\)](#)
- [Bachelor of Science with Honours – BSc\(Hons\)](#)

Or as part of an 18-month taught papers programme:

- [Master of Arts - MA](#)

Or as part of a two-year programme:

- [Master of Professional Practice in Behaviour Analysis - MPPBA](#)
This can be taken as a two-year post bachelor's or as a one-year post-honours or post-PGDip qualification, depending on the student's background.
<https://www.waikato.ac.nz/about/calendar/regulations/masters/mppba/>
- [Master of Applied Psychology in Behaviour analysis – MAppPsy\(BA\)](#)
This can be taken as a two-year post-bachelor's or as a one-year post-honours or post-PGDip qualification, depending on the student's background.
<https://www.waikato.ac.nz/about/calendar/regulations/masters/mapppsy/>

And a one year internship:

- [Postgraduate Diploma in the Practice of Psychology in Applied Behaviour Analysis - PGDipPracPsych\(ABA\)](#)
This is a one-year post-master's qualification
<https://calendar.waikato.ac.nz/regulations/diplomas/pgdippracpsych.html>

Applications for the above programmes are to be submitted via MyWaikato.

Doctorate in Philosophy Programme (PhD) in Behaviour Analysis

<https://www.waikato.ac.nz/about/faculties-schools/graduate-research/>

The University of Waikato offers a research-only doctoral programme leading to a Doctor of Philosophy (PhD) degree. Students with the appropriate level of honours in their master's degree may enrol in a PhD and undertake a research topic in behaviour analysis.

There is no coursework in a research-only PhD. Students must develop a research programme which they then conduct over two to three years under supervision. This research programme and its results are then written up as a thesis that is submitted for examination. It is possible to write up components of the research and submit these to relevant journals for consideration for publication as they are completed and prior to the completion of the whole thesis.

The School of Psychological and Social Sciences website contains some information on past and ongoing research topics and the University of Waikato website provides access to information on staff publications.

If you are interested in the PhD programme, please get in contact with any of the behavioural staff to discuss potential topics and supervision.



Postgraduate Programme overview

Undergraduate qualification

BA BSc BSocSc	Y1 120 points	PSYCH 100	PSYCH 101	One from List A	ARTSC110 Old Worlds-New Worlds	Field of the Degree 100 level	Field of the Degree 100 level	Elective	Elective
	Y2 120 points	PSYCH 211	PSYCH 204	PSYCH COURSE 200 level	One From List B	Field of the Degree 200 level	Elective	Elective	Elective
	Y3 120 points	PSYCH 307	PSYCH 314	PSYCH COURSE 300 level	PSYCH COURSE 300 level	PSYCH301 Research Assistantship	Elective	Elective	Elective

Honours or PGDip pathway (after undergraduate qualification)

Honours or PGDip	Y4 120 points	PSYCH 538	PSYCH 560	PSYCH 561	PSYCH 577	Elective course 500 level	Elective course 500 level	Elective course 500 level*	Elective course 500 level*
-------------------------	-------------------------	-----------	-----------	-----------	-----------	---------------------------	---------------------------	----------------------------	----------------------------

* If completing an Honours year, you will take a 30 point dissertation PSYCH591 instead of two 15 point courses

PhD pathway (after undergraduate qualification)

Honours or PGDip	Y4 120 points	PSYCH 538	PSYCH 560	PSYCH 561	PSYCH 577	Elective course 500 level	Elective course 500 level	Elective course 500 level*	Elective course 500 level*
MSc(Research)	Y5 120 points	PSYCH 594							
PhD **	Y6 120 points	PSYCH 900							
PhD	Y7 120 points	PSYCH 900							
PhD	Y8 120 points	PSYCH 900							

* If completing an Honours year, you will take a 30 point dissertation PSYCH591 instead of two 15 point courses

** You may apply for a PhD directly after completing an Honours year and meet entry criteria with Te Mata Kairangi – School of Graduate Research

Master of Applied Psychology in Behaviour Analysis - MAppPsy(BA)

The **Master of Applied Psychology in Behaviour Analysis** at The University of Waikato provides students with:

- a sound understanding of the underlying concepts and principles associated with behaviour analysis, and of the applications of these concepts and principles.
- knowledge of the research skills required for behaviour analysis, including the ability to read, interpret, and appraise published behavioural research critically, and the ability to conduct fundamental and applied research in behaviour analysis.
- an understanding of functional analyses of problem behaviour and of how to develop an appropriate programme for behaviour change in their area of specialty.
- analytic and library research skills, and skills in presenting proposals and reports in both written and oral format.

MAppPsy(BA) Degree Requirements

When this degree is the student's first postgraduate qualification in psychology it normally takes two years (full time) to complete. The programme requires 240 points, 120 of which are taken in the first year. These points normally come from five courses in behaviour analysis and two elective courses, as outlined below. Elective courses are selected in consultation with the behaviour analysis programme staff. The second year typically involves a 120-point thesis. To progress to Year 2 of the degree, a B+ average must be maintained. Due to the requirement for thesis supervision, entry into Year 2 of the degree is competitive and dependent on the availability of supervision capacity.

Year 1 MAppPsy(BA) – Course Work

Year 1 of the MAppPsy(BA) normally comprises 120 points of courses. The four core behavioural courses (15 points each) must be included, and candidates intending to go on to professional practice with humans should also include PSYCH586 Behaviour analysis Practicum (30pts).

The remaining 30pts come from other graduate courses, selected from the list of electives below or in discussion with programme staff. Behaviour analysis courses are offered either on campus (HAM) or online (NET).

Year 2 MAppPsy(BA) - Thesis

Year 2 of the MAppPsy(BA) programme normally comprises a 120-point research thesis on a behavioural topic. The thesis would typically be PSYCH594 (120 pt)

If the student requires further academic background, then they may need to take some courses in Year 2.

Thesis Time Frame

Enrolment in a thesis is normally 12 months full-time (or 24 months for part-time enrolment). The 12 (or 24) month period typically starts at the beginning of the academic year.

The research write-up of the thesis is due in 12 (or 24) months from that date. If the 12 (or 24) months terminates on a weekend day or a NZ public holiday the due date is brought forward to the workday prior to the weekend or holiday.

Summary of MAppPsy(BA) Degree Structure *

Year 1 120 points	PSYCH 538	PSYCH 560	PSYCH 561	PSYCH 577	Elective course 500 level	Elective course 500 level	Elective course 500 level	Elective course 500 level
Year 2 120 points	PSYCH 594							

*As at July 2024

MAppPsy(BA) Entry Requirements

MAppPsy(BA) programme for the two-year degree requires:

- a Bachelor's degree with a major in psychology,
- at least a B+ average (over 300 level courses),
- Some of the possible elective courses for the MAppPsy(BA) may have pre-requisite requirements over and above those required for the behaviour analysis courses and for entry into the programme. When possible, students should check these when selecting their third-year undergraduate papers. PSYCH307 Psychological Research Methods and PSYCH314 Behaviour Analysis or equivalent, is strongly recommended.

Entry into Year 2 of a MAppPsy(BA) programme for the one-year degree requires:

- a completed PGDip(Psych) or a Bachelor's with Honours degree in psychology including the core 500-level courses for the programme,
- an average grade of at least a B+ averaged over their psychology graduate courses,

- availability of supervision for the thesis.

Students accepted into the programme at Year 2 may be required to take specific courses alongside their thesis depending on the content of their PGDip(Psych) or Honours degree courses.

Using a PGDip(Psych) or Honours in psychology (with core courses) as a substitute for Year 1 of the MAppPsy(BA)

Candidates from the University of Waikato whose grades do not meet the requirement or those who have a high enough grade average but who would prefer to do an honours degree, may take the MAppPsy(BA) Behaviour analysis courses as part of a PGDip(Psych) or an honours degree.

These candidates can then apply for entry to the MAppPsy(BA) at Year 2 and can take the MAppPsy(BA) as a one-year degree once their PGDip(Psych) or honours is complete.

If they have some but not all of the Year 1 content, then they may be required to take additional courses as part of Year 2.

Master of Professional Practice in Behaviour Analysis - MPPBA

The **Master of Professional Practice in Behaviour Analysis** at The University of Waikato provides students with:

- a sound understanding of the underlying concepts and principles associated with behaviour analysis, and of the applications of these concepts and principles;
- an understanding of functional analyses of problem behaviour and how to develop an appropriate programme for behaviour change in their area of specialty;
- a grounding in evidence-based practice and the scientist practitioner model of practice in psychology in their practice;
- an understanding of ethical and professional practice, including cultural and legal knowledge relevant to the New Zealand context;
- supervised experience in the practice of ABA in a community placement.

MPPBA Degree Requirements

When this degree is the student's first postgraduate qualification in psychology it normally takes two years (full time) to complete. The programme requires 240 points, 120 of which are taken in the first year. Points in the first year normally come from five courses in behaviour analysis and two elective courses, as outlined below. Elective courses are selected in consultation with the behaviour analysis programme staff. The second year involves 60 points of coursework and a 60-point practicum.

Year 1 MPPBA – Coursework

Year 1 of the MPPBA normally comprises 120 points of courses. The four core behavioural courses (15 points each) must be included, and the inclusion of PSYCH586 Behaviour analysis Practicum (30pts) is strongly recommended.

The remaining 30pts come from other graduate courses, selected from the list of electives below or in discussion with programme staff. Behaviour analysis courses are offered either on campus (HAM) or online (NET).

Year 2 MPPBA – Coursework

Year 2 of the MPPBA comprises two courses (60 points) on the practice of behaviour analysis, including a course on ethics. The other 60 points come from a practicum which involves supervised practice in a community setting.

PSYCH551 Case Study Analysis in Applied Psychology (45 pts)

This course teaches students to critically analyse and apply theoretical knowledge of behaviour analysis to psychological practice within a science-practitioner model, aiming to develop effective and culturally sensitive practitioners. This paper can be taken as a stand-alone paper with permission from the paper convenor. Participating in this paper requires students to have access to a practicum placement, employment, or voluntary work that provides opportunities to practice behaviour analysis.

PSYCH552 Ethical Issues in Psychology (15 pts)

This course provides the opportunity to develop knowledge and skills concerning ethical issues in the professional practice in Psychology, specifically in applied behaviour analysis. This paper can be taken as a stand-alone paper with permission from the paper convenor.

PSYCH554 Advanced Behaviour Analysis Practicum (60 pts)

This course provides students with the opportunity to develop practical skills including conducting behavioural observations and implementing function-based interventions, within a mixture of structured workshops and community-based placements.

Summary of MPPBA Degree Structure*

Year 1 120 points	PSYCH 538	PSYCH 560	PSYCH 561	PSYCH 577	Elective course 500 level	Elective course 500 level	Elective course 500 level	Elective course 500 level
Year 2 120 points	PSYCH 551			PSYCH 552	PSYCH 554			

* As at July 2024

MPPBA Entry Requirements

MPPBA programme for the two-year degree requires:

- a Bachelor's degree with a major in psychology,
- at least a B average in psychology (over 300 level courses),
- Some of the possible elective courses for the MAppPsy(BA) may have pre-requisite requirements over and above those required for the behaviour analysis courses and for entry into the programme. When possible, students should check these when selecting their third-year undergraduate papers. PSYCH307 Psychological Research Methods and PSYCH314 Behaviour Analysis, or equivalent, is strongly recommended, though not required for entry.

Entry into Year 2 of the MPPBA programme for the one-year degree requires:

- a completed PGDip(Psych) or a Bachelor's with Honours degree in psychology including the core 500-level courses for the programme,
- an average grade of at least a B averaged over their psychology graduate courses,

Using Year 1 of the MAppPsy(BA), a PGDip(Psych) or a BSocSc(Hons) (with appropriate courses) as a substitute for Year 1 of the MPPBA

Candidates from the University of Waikato who plan to undertake a PGDip(Psych) or an honours degree may take the MPPBA Behaviour analysis courses as part of a PGDip(Psych) or an honours degree.

These candidates can then apply for entry to the MAppPsy(BA) at Year 2 and can take the MPPBA as a one-year degree once their PGDip(Psych) or honours is complete.

Candidates from the University of Waikato who have completed MAppPsy(BA) Year 1 may apply to transfer to the one-year MPPBA and would only need to complete the Year 2 requirements if they meet entry requirements.

Core 500 Level Courses

PSYCH538B HAM or NET (15pts)

Applications of Behaviour Analysis

This course covers the application of behavioural principles in a variety of settings. The objective is to examine and critique recent applications of the methods and theories of behaviour analysis as they apply to a range of settings to both prevent and change problem behaviours. Practical skills are emphasised and are addressed in the practical component.

PSYCH560B HAM or NET (15pts)

Applied Behaviour Analysis: Theory and Issues

Students in this paper explore the conceptual issues around behaviour analysis, including those underlying the implementation of behavioural programmes across a wide range of applied areas. A focus is on the philosophical underpinnings but we will also learn about topics that are currently under debate. Topics covered include the scientist-practitioner model, evidence-based practice, private events (including fear and anxiety), causation of behaviour, the use of aversive strategies, and the clinical application of behaviour analysis. It will also introduce the theoretical background to some contemporary therapies, including Acceptance and Commitment Therapy.

PSYCH561A HAM or NET (15pts)

Behaviour Analysis: Concepts and Principles

This course provides an in-depth introduction to the conceptual foundations and core principles of behaviour analysis, including research and theory related to the concepts of reinforcement, extinction, stimulus control, derived stimulus relations, and motivating operations.

PSYCH577A HAM or NET (15pts)

Single Subject Research Methods

This course covers research methodologies used in the field of behaviour analysis, including collection of data, experimental design, data presentation and analysis, and interpretation and reporting of research findings.

Online (NET) Courses

The courses are available online when they have a NET extension or on campus (with a HAM extension). Where both are available, the two versions are taught synchronously. Students wishing to work online enrol in the NET version of each course. Each course involves a two-hour class and one hour of tutorial work per week. Online (NET) students may attend classes in real time through videoconferencing. Some lectures are recorded and made available online. Tutorials involving discussions of sensitive topics are not recorded. Both NET and on-campus students complete the tutorials for these courses online at times that suit them. NET students also complete the practical work for PSYCH538 online in their own time. On-campus students may do this practical work online or on campus.

Elective Courses

PSYCH564	15pts	Developmental Psychopathology
PSYCH575	15pts	Kaupapa Māori Psychology
PSYCH580	15pts	The Psychology of Crime and Criminality: Research and Practice
PSYCH581	15pts	Psychological Assessment
PSYCH586	30pts	Behaviour Analysis Practicum

PSYCH586D NET (30pts)

Behaviour Analysis Practicum

The Behaviour analysis Practicum covers the assessment of verbal behaviour in a practical setting using an assessment tool called the VB-MAPP. Students will carry out this assessment in an external organisation/agency/school with a client and be given professional supervision and instruction to ensure ethical and effective practice. The course is delivered in flexi mode: content and workshops are delivered online, but students are required to attend an appropriate university approved practicum setting in person to complete the practical components. If you intend to progress to the PGDipPracPsych(ABA), this course is recommended.

PSYCH586 has limited places which is dependant on the availability of suitable placements. You will be required to complete a school selection form (including references) and if admitted to the paper, you will be required to complete police vetting before the paper starts – please see the paper outline for further details.

Other psychology courses relevant to the student’s specialty may be included with approval from programme staff. Students with biology in their undergraduate degree, in addition to their psychology major, and with an interest in applications of behaviour analysis to animal behaviour may consider taking relevant 500-level psychology courses in animal behaviour or courses in biological sciences. Students with education in their undergraduate degree, in addition to their psychology major, may include an appropriate education 500-level course.

Elective Courses for Online Students

Students who wish to take the full MAppPsy(BA) online should discuss their elective options with staff in the programme.

Applying for Entry for the MAppPsy(BA) and MPPBA

Potential applicants should approach the School of Psychological and Social Sciences for help in planning the most appropriate course of study for their needs and background: behavioural.psychology@waikato.ac.nz

Students who are not graduates of Waikato should also include their academic record when contacting the school. Details of each student's course of study must be approved by programme staff prior to the student being accepted into the programme.

Please apply via MyWaikato for the MAppPsy(BA) and MPPBA - <https://www.waikato.ac.nz/>

MPPBA

Please apply via MyWaikato. Once your application has been assessed and meets entry criteria, you will be sent an internal school selection form to complete. Selection forms, including any additional documentation must be submitted by 11.59pm on September 15.

Please contact behavioural.psychology@waikato.ac.nz for the 'How to Apply – MPPBA' document for further information.

MAppPsy(BA) Year 1

Apply via MyWaikato

MAppPsy(BA) Year 2

If you are already enrolled in the Year 1 MAppPsy(BA), you will automatically be sent an internal school selection form in early B trimester.

If you are new to the qualification, please apply via MyWaikato. Once your application has been assessed and meets entry criteria, you will be sent an internal school selection form to complete.

Selection forms, including any additional documentation must be submitted by 11.59pm on September 15.

Please contact behavioural.psychology@waikato.ac.nz for the 'How to Apply – MAppPsy(BA)' document for further information.

Postgraduate Diploma in the Practice of Psychology (Applied Behaviour Analysis) - PGDipPracPsych(ABA)

The **PGDipPracPsych(ABA)** provides those with Masters or Doctorate degrees containing a substantial component of behaviour analysis with:

- a quality learning experience for making the transition from academic knowledge to professional practice;
- a pathway for registration as a psychologist under the 'General' scope with the NZ Psychologists Board under the Health Practitioners Competency Assurance Act (HPCA Act);
- a means of achieving bi-cultural competence as an important component of work as a psychologist and exhibiting a commitment to the Te Tiriti o Waitangi throughout their training and professional development.

The mission of the ABA internship training programme at the University of Waikato is to collaborate with the professional community to train culturally and clinically competent, thoughtful, and reflective psychologists specialising in ABA who will contribute to the health and well-being of their communities.

Graduates of the PGDipPracPsych(ABA) will have developed practical skills in applying behavioural principles to a range of behaviour problems in their area of specialty, including experience with functional analyses of problem behaviour, and developing and applying appropriate programmes for behaviour change. They will be able to design techniques for assessment and data collection, implement behaviour change programmes and adjust them in the light of any problems that arise. They will be competent in addressing legal, ethical, cultural (in the context of bi-culturalism consistent with Te Tiriti o Waitangi principles) and professional issues while abiding by the relevant guidelines for responsible conduct under the NZ Psychologists Board. At the end of the programme, graduates will have awareness, knowledge, and skills in positive behavioural approaches to dealing with challenging behaviour and in clinical applications of behaviour analysis.



Candidates for this qualification must enrol and follow an approved programme of study in the Division of Arts, Law, Psychology and Social Sciences for at least one year of full-time study, or not more than three years of part-time study.

The PGDipPracPsych(ABA) is accredited by the NZ Psychologists Board as providing the training required for and supervision of 1500 hours of professional experience required for students in NZ wishing to register as Psychologists in NZ under the NZ Health Practitioners Competence Assurance Act (<https://www.health.govt.nz/our-work/regulation-health-and-disability-system/health-practitioners-competence-assurance-act>) in NZ.

Students must have appropriate internship employment and have their field supervisor arranged to enter the programme (see entry requirements).

The University of Waikato only offers PSYCH553 to interns in practice in NZ.

PGDipPracPsych(ABA) Structure

The PGDipPracPsych(ABA) is a one-year full-time or two-year part-time postgraduate diploma worth 120 points. The programme includes three courses that are normally taken simultaneously to complete the diploma.

Core Courses for PGDipPracPsych(ABA)

PSYCH551D: Case Study Analysis in Applied Psychology (45 pts)

This course teaches students to critically analyse and apply theoretical knowledge of behaviour analysis to psychological practice within a science-practitioner model, aiming to develop effective and culturally sensitive practitioners. This paper can be taken as a stand-alone paper with permission from the paper convenor. Participating in this paper requires students to have access to a practicum placement, employment, or voluntary work that provides opportunities to practice behaviour analysis.

PSYCH552A Ethical Issues in Psychology (15pts)

This course provides the opportunity to develop knowledge and skills concerning ethical issues in the professional practice in Psychology, specifically in applied behaviour analysis. This paper can be taken as a stand-alone paper with permission from the paper convenor.

PSYCH553X: The Practice of Psychology (60pts)

This paper is available to students enrolled in the PGDipPracPsych(ABA) programme or by special permission from the convenor only. It provides supervision for the internship. Undertaking PSYCH553 requires regular attendance at supervision meetings and regular maintenance of a professional practice log. PSYCH553 requires the student to complete 1500 hours of supervised professional practice over a year if taken full-time (part-time enrolment is also possible).

PSYCH552 runs for A trimester, PSYCH551 is taught during the D-teaching period (A and B trimesters), and PSYCH553 runs for the full 12 months of the year with breaks during and between the trimesters, and a short break for the Christmas and New Year holiday period.

For all three papers, students are required to attend classes, workshops and (individual and group) supervision in real time. These are taught in a variety of teaching modalities that include in-person attendance at the university, videoconferencing platforms, and in-person experiences at off-campus locations such as a marae for runanga-based learning. The programme starts at the beginning of the academic year which begins at the end of February. If fulltime, the programme requires the person has every Monday afternoon, 1pm to 5pm (except public holidays) available for the University-provided group supervision, case conferences and for the classes.



PGDipPracPsych(ABA) Entry Requirements

In addition to fulfilling the requirements set out in the appropriate University of Waikato regulations, students must meet the School of Psychological and Social Sciences requirements for entry into the programme. The School of Psychological and Social Sciences requirements are:

- A master's or doctoral degree specialising in behaviour analysis
The master's degree must include a significant research component (90 points or greater) - the MPPBA alone does not qualify.

Where a candidate has not completed a named degree in behaviour analysis, the School of Psychological and Social Sciences will assess whether sufficient graduate-level papers and a thesis/dissertation appropriate to the specialisation have been taken to allow entry. Students may be required to take extra course work prior to or concurrently with the programme.

- Ongoing, full-time or part-time employment (either paid or unpaid) in NZ which provides the opportunity to practice behaviour analysis within an organisation that allows this work to be used as an internship.

Whether the employment requirement is met will be determined by the School of Psychological and Social Sciences from the job description. A signed letter of agreement from the candidate's organisation/manager is also required.

- The availability of field supervision for PSYCH553.
Field supervision must be from a Registered Psychologist.
- The availability of a place in the programme.
The programme currently accepts up to 10 applicants for entry into the programme each year.

Entry is subject to the approval of the Chair of the School of Psychological and Social Sciences.

Applying for Entry into the PGDipPracPsych(ABA)

Before applying formally for entry into this programme, candidates should contact the School of Psychological and Social Sciences to discuss their plans, including the suitability of the employment and the availability of appropriate supervision - behavioural.psychology@waikato.ac.nz . They will be put in touch with the appropriate staff to talk about this.

Applications are called for towards the end of the year with a deadline of September 15.

Once accepted into this programme the student must apply to the NZ Psychologists Registration Board to register as an Intern Psychologist (see NZ Psychologists Board web site for fees and details of how to apply for this):

www.psychologistsboard.org.nz

Applications will require the following documentation:

- Application for qualification in MyWaikato

Once university entry criteria have been met, the School of Psychological and Social Sciences will invite you to complete the Internal School selection form which includes:

- A Statement of Purpose
- Your Curriculum Vitae
- Academic Transcript
- Thesis Abstract
- Two Letters of recommendation from referees
- An agency letter of support from an employer to confirm the employment is appropriate for the programme and details of field supervision
- An onsite supervisor's Curriculum Vitae
- Job description

Please apply early in MyWaikato as the internal school selection form and references must be submitted by 11.59pm, September 15.

All applications will be evaluated based on the applicant's previous academic, work and personal experience, bicultural appreciation, commitment to training, and understanding of the profession. There is no upper or lower age limit. The selection process is undertaken in a way which seeks to attract the best applicants rather than favouring one gender over another. However, given that there is a shortage of men in the profession and a shortage of Māori, if two applicants are equal in all the aforementioned criteria, then gender and/or cultural identity may be considered in choosing an applicant. NZ is a bicultural country which is fortunate to have peoples of many and varied cultures. We welcome applications from a wide range of cultural identities,

Appropriate Clients and Placements

The placement and job description must allow the intern to undertake the required amount of practice of psychology that can be classified as applied behaviour analysis. The most important aspect of employment is the opportunity to practice psychology and to learn to apply behaviour analysis principles in changing behaviour and this will be evaluated by the University prior to acceptance.

The range of clients and problems must include opportunities to undertake behavioural assessments (including functional analyses), designing, overseeing and monitoring behaviour change programmes, changing challenging behaviours (e.g., aggression, self-injurious behaviour, tantrums), skill development (such as independent living skills, communication, educational skills, health care skills and social skills), and teaching behaviour management skills (e.g., parent, caregiver, teacher, and staff training in ABA).

More information about the professional programme (FAQ document), please contact behavioural.psychology@waikato.ac.nz



School of Psychological and Social Sciences

The University of Waikato

Private Bag 3105

Hamilton 3240

New Zealand

Email: behavioural.psychology@waikato.ac.nz

Tel: +64 7 838 4136

Toll Free: 0800 WAIKATO (800 145)

Website: www.waikato.ac.nz

Division of Arts, Law, Psychology & Social Sciences

email: alpss@waikato.ac.nz

Toll free: 0800 WAIKATO (800 145)

©The University of Waikato, revised July 2024



THE UNIVERSITY OF
WAIKATO
Te Whare Wānanga o Waikato

KO TE TANGATA
FOR THE PEOPLE

The University of Waikato
Private Bag 3105
Hamilton 3240
New Zealand

0800 WAIKATO 📞
0800 924 528
info@waikato.ac.nz ✉️
waikato.ac.nz 🌐