



National Institute of Demographic and Economic Analysis

Te Rūnanga Tātari Tatauranga

THE UNIVERSITY OF WAIKATO

Annual Report 2019

Private Bag 3105, Hamilton, New Zealand 3240

<http://www.waikato.ac.nz/nidea>

Phone: +64 7 8384040 Email: nidea@waikato.ac.nz



THE UNIVERSITY OF
WAIKATO

Te Whare Wānanga o Waikato

NIDEA's Mission Statement

NIDEA undertakes research at the interface of population and economics to help inform choices and responses to the demographic, social and economic interactions that are shaping New Zealand's future.

NIDEA seeks to address the population-economy interface by:

- modelling the effects of demographic and economic change at global, regional and national scales on long-term social transformation, competitiveness and productivity
- conceptualizing, measuring and evaluating options for enhanced wealth creation and general wellbeing in an increasingly diverse ageing society
- researching migration and the transnational dimensions of New Zealand's population and economy in Oceania
- enhancing understanding of the patterns, causes and consequences of regional social, economic, and ethnic diversity and disparity within New Zealand.

Underpinning these research programmes are three founding principles that permeate all aspects of NIDEA's activities:

- to produce innovative and consequential knowledge at the nexus of population and economy
 - to provide a bridge between new knowledge and its practical application in policy and business environments
 - to build research capacities in the areas of demography and economics that will secure the reproduction of research excellence in critical areas of social inquiry.
-

Table of contents

NIDEA Directorate - Staff	3
NIDEA Associates and Research Associates.....	5
Affiliates	5
Background to NIDEA.....	7
The Year in Perspective	7
Collaborative Health: The University of Waikato Medical Research Centre.....	14
Externally Funded Research.....	16
Internally Funded Research	27
NIDEA Students and Graduates.....	31
Achievements.....	31
Postgraduate Completions	31
.....	32
Masters / Fellows Supervision.....	32
PhD Supervision	33
Elective Medical Placement.....	36
Summer Scholarship Programme 2018-2019	36
Professional and Editorial Roles	37
Guest Lectures.....	40
Keynote Addresses, Plenary and Invited Presentations, Discussants	41
Other Invited Presentations	43
International Conferences	44
National Conferences	44
Publications and Research Output.....	46
Media Interviews and Citations.....	55

Annual Report from the Director

Welcome to the 2019 annual report of the National Institute of Demographic and Economic Analysis. The past year has been a very busy one for the institute, with the arrival of new staff, significant contributions to public debate on a range of issues, a growing teaching programme and ongoing work on our extensive and diverse research activities.



One of the highlights of 2019 for NIDEA was welcoming our new Senior Lecturer in Population Studies, Dr. Yara Jarallah. Yara has a PhD in Sociology from Brown University and has worked at the Universities of Queensland and Melbourne prior to joining the University of Waikato. She is an expert in the demography of forced migration and war and brings significant experience in mixed- and multi-method population research; since arriving in the middle of 2019 Yara has already made important contributions to teaching and established a new research programme focusing on the effect of civil war and forced displacement on refugees' life course transitions.

I have been particularly pleased to see the growth of NIDEA's undergraduate and postgraduate programmes in Population Studies and Demography. NIDEA offers the only Population Studies programme in Aotearoa New Zealand, and while our core activity is research we maintain significant focus on developing students' interest and ability in addressing population issues. The number of students enrolling in undergraduate papers increased substantially in 2019 and we are seeing similar numbers at the beginning of 2020. With the arrival of Dr. Yara Jarallah we are well positioned to cultivate further growth in this area with a new paper on migration planned for 2021. Over the course of 2019, NIDEA welcomed five new PhD students and as we begin 2020 there are now 12 PhD students undertaking topics across the breadth of expertise that NIDEA offers.

The delayed release of data from the 2018 Census was a significant issue for population researchers in 2019, and NIDEA staff played a key role in both providing advice to Statistics New Zealand and commenting publicly on the implications of Census failures. Professor Tahu Kukutai played a significant role in the Census External Data Quality Panel, and Associate Professor Polly Atatoa Carr provided critical commentary in relation to the impacts of census shortcomings for Māori and Pacific peoples. Another significant public issue in 2019 was the

events surrounding Tuia250, marking the 250 years since the HMS Endeavour arrived in Aotearoa. Dr. Arama Rata has had significant visibility in media debates on Tuia250, providing essential critique of the celebration of histories that are tied to violence and the pervading effects of settler colonialism.

As this annual report documents, NIDEA researchers continue to be highly productive and impactful in their areas of expertise. Collectively, researchers at NIDEA and the Medical Research Centre published 52 journal articles, 12 book chapters, 2 books and gave dozens of conference presentations including many keynote and invited talks. The variety of these outputs and their contribution to advancing knowledge in Aotearoa New Zealand and internationally demonstrate NIDEA's ongoing position at the forefront of multidisciplinary population research.

As we prepared this annual report, the NIDEA team was in the midst of a lockdown situation resulting from the COVID-19 global pandemic. The COVID-19 pandemic and government responses are having enormous impacts on the daily lives of many people. They also raise significant challenges for the work that NIDEA researchers. I am delighted to be part of a team who are leading responses to this situation – most notably Polly Atatoa Carr in her tireless public health work with the Waikato DHB and nationally with the Ministry of Health, and Tahu Kukutai in her role on the Chief Science Advisor Forum. For others in the NIDEA team, the pandemic and response has significant impacts in our research on Māori and Indigenous populations, population health and equity, population change and migration.

In November 2020 NIDEA will mark its ten year anniversary. This is an important opportunity for the institute to celebrate on its successes to date, to reflect on what has changed in the world of population research and consider the challenges that lie ahead, not least in the context of the current circumstances surrounding the COVID-19 pandemic. While it remains uncertain whether we can host any events to mark the anniversary we will find ways to celebrate this anniversary in a way that also offers opportunities to reflect on future aspirations for population research.



Professor Francis L. Collins

NIDEA Directorate - Staff

Director

Professor Francis Collins BA, BA(Hons), MA, PhD *Auckland*

Professors

Professor Tahu Kukutai BA BA(Hons) MSocSc *Waik* MA PhD *Stanford*

Associate Professor Polly Atatoa Carr MBChB, MSc, MPH, FNZCPHM

Professor Ross Lawrenson, Professor of Population Health MBBS, MD;
DRCOG; Dip.Comm Health *Otago*; FP Cert; DHMSA; FAFPHM; FFPH;
FRCGP

Emeritus Professors

Professor David Ian Pool CNZM BA MA *NZ* PhD *ANU* FRSNZ

Professor Richard D. Bedford QSO BA MA *Auck* PhD *ANU* FRSNZ

Professor Peggy Koopman-Boyden CNZM BA MA DipEd *Massey*

Professor Jacques Poot Drs *VU Amst* PhD *Well* HonFRNAAS MAE

Senior Research Fellows

Dr Arama Rata BSc (Hons), PhD *Victoria*

Dr Lynne Chepulis (Medical Research Centre) BSc, MSc, Mphil, PhD

Dr Chunhuan Lao (Medical Research Centre) BSc, MSc, PhD

Rawiri Keenan (Medical Research Centre) MBChB, FRNZCGP

Senior Lecturer

Dr Yara Jarallah BA *Birzeit University*, MSc *American University Beirut*, PhD *Brown University*

Research Fellows

Dr Tania Blackmore (Medical Research Centre) BSocSci, MSocSci, PhD

Dr Shemana Cassim (Medical Research Centre) BSc; MAppPsync(Comm); PhD

Jonathan Kilgour MBA (Dist), LLM (Hons), BSocSc

Dr Ryan Paul (Medical Research Centre) BHB MBChB FRACP PhD

Senior Research Officer

Shefali Pawar BE *Pune University* GradDip(Stats) *Waikato* MSocSc(Hons) *Waikato*

Research Officers

Moana Rarere BMS GradCert (SocPol) BSocSc(Hons) MSocSc(Hons) *Waikato*

Brittany Morison MSc, BAppSc (Medical Research Centre)

Kimberley Norman BApplSc MSci (Psychology) *Massey University* (Medical Research Centre)

Dr Rebekah Graham D.Phil (part-time Research Officer, Housing first MBIE project)

Research Analyst

Sheena Moosa PhD, MPH, MBBS (Medical Research Centre)

Research Assistant

Mrs Leonie Brown RGON BSc (Medical Research Centre)

Mrs Jana Rowlands (Medical Research Centre)

CaDDANZ Research Manager

Renae Dixon BSocS *Waik*

Personal Assistant to Professor Ross Lawrenson

Mrs Gillian Hunn (Medical Research Centre)

Administrator

Mrs Sheree Findon

NIDEA Associates and Research Associates

Dr Lars Brabyn BA(Hons) BSc(Hons) PhD *Cant*

Dr John Bryant BA BA(Hons) *Cant* PhD *ANU*

Dr Michael Cameron BMS(Hons) PhD *Waik*

Dr William Cochrane BSocSc MSocSc PhD *Waik*

Dr Andrew Coleman PhD *Prin*

Len Cook CBE BA(Hons) *Otago* CB

Prof Lynda Johnston BA *Otago*, MSocSc PhD *Waik*

Dr Naomi Simmonds BSocSc MSocSc PhD *Waik*

Prof Nicola Starkey BSc(Hons) *C.Lancs*, PhD *Leeds*

Dr Sarah Jane Tiakiwai MA(Hons) *Auck*, PhD *Waik*

Prof Iain White BA(Hons), Mtpl, MRTPI, PhD *Manchester*

Affiliates

AProf Per Axelsson MSocSc PhD *Umeå*, Researcher Cedar - Centre for
Demography and Ageing, Umeå University

Dr Hayley Bennett MPH MBChB BHB *Auck*, Public Health Medicine Specialist

OraTaiao: NZ Climate and Health Council

Dr Sarah Berry BSc MSc *Waik*, PhD *Virginia Tech*, Research Manager,
Auckland War Memorial Museum

Dr John Bryant BA, BA(Hons) *Cant* PhD *ANU*, Statistics New Zealand

AProf John Campbell BA MA *Cant*, PhD *Hawaii*, formerly Geography
Programme FASS

Prof Yves Charbit BA, MA *Paris-Sorbonne*, Dip Sciences *Po*, PhD *Oxf*, Doctorat
d'Etat ès-Lettres *Sorbonne*

Len Cook BA(Hons) *Otago* CBE, Victoria University of

Wellington/FamiliesCommissioner SUPERU

Dr Robert Didham MSc *Cant* PhD *Tubingen*, Statistics New Zealand

Dr Natalie Jackson DipNZIMR, BSocSc, MSocSc *Waik*, PhD *Anu*, Natalie

Jackson Demographics Ltd

Prof Te Kani Kingi MA *Waik*, PGDipReoMāori *Waiariki*, PhD

PGDipMaori *Massey*, Executive Director: Research and Innovation, Te Whare

Wānanga o Awanuiārangi

Dr David Maré BA, BCom, MCom *Auck* PhD *Harvard*, Motu

Prof Philip Morrison MA *Well* PhD *Toronto*, Victoria University of Wellington

Prof Susan Morton FAFPHM, PhD GradDipPH *LSHTM*, BHB MBChB *Auck*,

DipED , Director: Growing Up in NZ/Centre for Longitudinal Research,

University of Auckland

Dr Lynda Sanderson BA, BSc *Cant* BCA *Well* MPhil, PhD *Waik*, MBIE/MOTU

Dr Janet Sceats MSc, LSHTM, PhD *Lond*, Medical demographer

AProf Victor Thompson BA *UIUC*, MA PhD *SU*, Director of Law and

JusticeProgram Rider University

Dr Liza Lack, BMedSci BM BS, MRCP, DRCOG, DCH, DFFPA, FRNZCGP, Honorary

ResearchFellow (Medical Research Centre)

Dr Steven Lillis, BHB, MBChB, FRNZCGP, Dip Sports Med, MGP Dip Strat Leadership, PhD
FAcadMed, Honorary Senior Fellow (Medical Research Centre)

Tim Norman, Honorary Associate RGON (Medical Research Centre)

Professor Adam El Gamel MB BCh, FRCS, FRCS, FRACS (Medical Research Centre)

Background to NIDEA

The National Institute of Demographic and Economic Analysis (NIDEA) was launched on 24 November 2010; its mission to undertake research that will help inform choices and responses to the demographic, social and economic forces that are shaping New Zealand's future. Initially an informal collaboration of researchers at the University of Waikato's Population Studies Centre, Waikato Management School and Wellington-based Motu Economic and Public Policy Research Trust, NIDEA now links together a virtual community of leading national and international researchers working at the interface of demography and economics. NIDEA research supports and guides decision-making in a broad range of areas such as the labour market, healthcare, local government planning, housing and education, welfare, business enterprise and the market generally. NIDEA also contributes to the building of research capacity in the field through its undergraduate teaching, supervision of graduate and postgraduate students, workshops and seminars.

The Year in Perspective

As NIDEA enters into its tenth year since launching the institute continues to maintain a significant reputation for the quality and impact of research while also experiencing change in staffing and research foci.

Highlights

- 19 externally funded research projects were hosted at NIDEA in 2019, and NIDEA researchers are involved in many more projects based in other parts of the University of Waikato and at other institutions
- NIDEA researchers and students published 52 journal articles, 12 book chapters, 2 books, and presented at international and national conferences
- The number of PhD students based in NIDEA, or supervised by NIDEA researchers, grew to 19 in 2019
- The Population Studies undergraduate programme continues to be successful with increases in student numbers in both of our core Population Studies papers, with further expansion due in 2020

Sorbonne University, Paris MOOC: Population and Health Development

Emeritus Professor Ian Pool taught a six week online course on Population and Health Development for Sorbonne University (Paris). The course presented an analysis of the evolution of health over time in relation to population dynamics and changes in population structure. It addressed issues related to longer longevity, and questions about the ability of health systems to effectively take health into account as a parameter of development. There were 2201 registrations for the course, which ran from September to December 2019. The course is available here: <https://www.fun-mooc.fr/courses/course-v1:USPC+37027+session01/about>

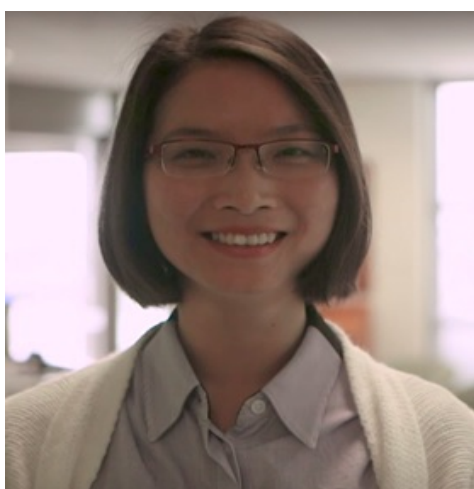


Emeritus Professor Ian Pool

NIDEA Staffing Developments

In 2019 we welcomed Dr. Yara Jarallah to NIDEA as Senior Lecturer of Population Studies; Yara has a PhD from Brown University and is an expert in demography with a particular emphasis on forced migration and war and their intersection with partnership and family formation. In addition to teaching and research activities, Yara has also taken on the role of Undergraduate Advisor in Population Studies, overseeing the undergraduate Population Studies programme run by NIDEA.

Dr Chunhuan Lao was promoted to the position of Senior Research Fellow in 2019. Chunhuan has demonstrated a high level of achievement as a Research Fellow since joining the University. She has not only developed a strong publication record and used her expertise in statistics and economics to support the research of her colleagues, but also brought in a number of grants as an independent researcher.



Dr Chunhuan Lao



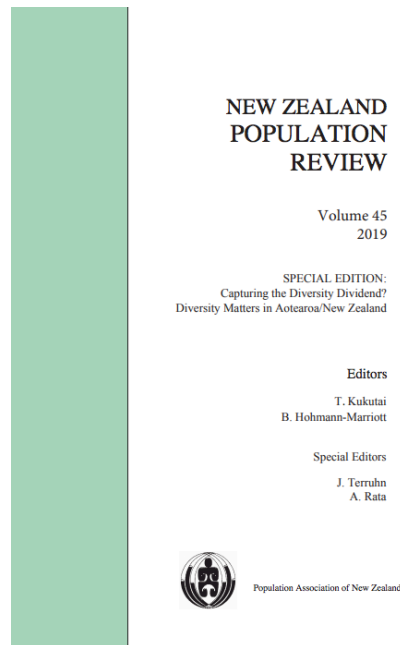
Dr Yara Jarallah

Featured Publications

Capturing the Diversity Dividend? Diversity Matters in Aotearoa/New Zealand

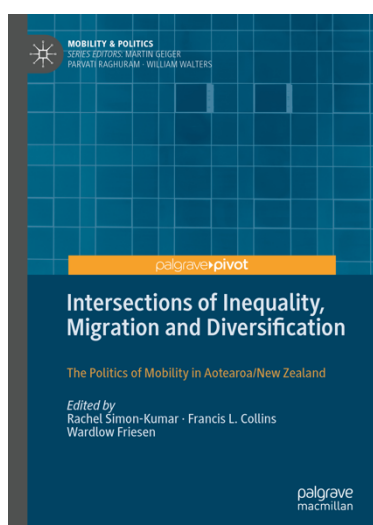
- Special Editors: Jessica Terruhn (Massey University) and **Arama Rata (NIDEA)**

This special issue of the *New Zealand Population Review* engages with the notion of migration-led diversity, the ways in which it matters and comes to matter in 21st century Aotearoa New Zealand. The issue brings together contributions by scholars connected to the Capturing the Diversity Dividend in Aotearoa New Zealand (CaDDANZ) research programme, who have extensively researched demographic change, the fluidity of cultural identities, the role of Māori in shaping approaches to immigration, and how population diversity manifests and matters in workplaces, institutions and neighbourhoods. The collection includes papers by: Arama Rata, Jacques Poot, Natalie Jackson and Francis Collins.



Intersections of Inequality, Migration and Diversification: the politics of mobility in Aotearoa/New Zealand

- Edited by Rachel Simon-Kumar (University of Auckland), **Francis Collins (NIDEA)** and Wardlow Friesen (University of Auckland)

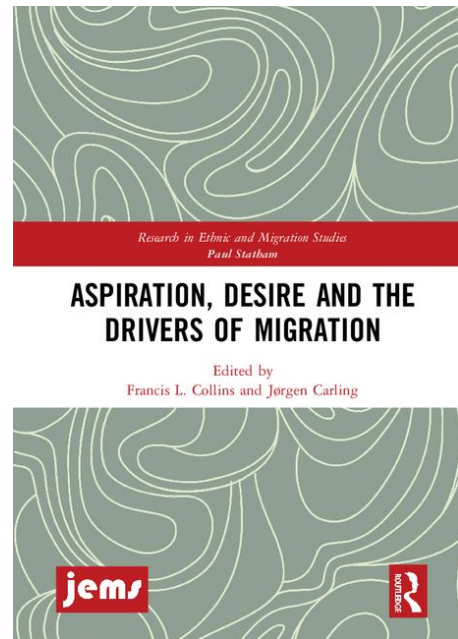


This book examines the relationship between migration, diversification and inequality in Aotearoa/New Zealand. The authors advance a view of migration as a diversifying force, arguing that it is necessary to grapple with the intersection of group identities, state policy and economic opportunities as part of the formation of inequalities that have deep historical legacies and substantial future implications. Exploring evidence for inequality amongst migrant populations, the book also addresses the role of multicultural politics and migration policy in entrenching inequalities, and the consequences of migrant inequalities for political participation, youth development and urban life.

Aspirations, Desire and the Drivers of Migration

- Edited by **Francis Collins (NIDEA)** and Jørgen Carling (Peace Research Institute Oslo)

This book throws new light on the drivers of migration and explores the different ways in which aspiration and desire are involved in the generation, experiences, and outcomes of migration. The authors propose novel approaches to advancing collective understanding of migration, including reassessments of classical push and pull theory; explorations of the lexicon of aspiration, desire and voluntariness in migration; and reflections on the relationships between migration and modernity, youth and expectation, and anti-immigrant discourses. The chapters have a broad geographical scope, spanning migration on different continents and in diverse socio-economic and cultural settings. At a time when migration has become one of the most prominent areas of national and international political debate, this volume provides the tools for researchers to reconsider how we understand the forces and outcomes of global mobility. This book was originally published as a special issue of the *Journal of Ethnic and Migration Studies*.



Hamilton Public Lecture Series

In 2019, Professors Tahu Kukutai and Francis Collins gave their Inaugural Professorial Lectures within the Hamilton Public Lecture Series. Inaugural lectures are significant events in academic careers, demonstrating the significance of an academic’s contributions, acknowledging those who have enabled their development and introducing the University of Waikato’s newest professors to the community. Professor Kukutai’s lecture ‘From Populations to Peoples’, traced how she is blending her passion for demography and Indigenous data sovereignty to craft a new approach to Indigenous population research. Professor Collins’ lecture ‘Migration: geography, desire and inequality’ addressed the challenges faced by the field of migration studies, including its embeddedness within settler colonialism, and the critical importance of linking the social forces that generate migration with the unequal impacts it has in people’s lives. Both Professor Kukutai and Professor Collins’ lectures were very well attended by University of Waikato staff and students, friends and family and the wider public.

The lectures are available to view on the University of Waikato's YouTube page:

<https://www.youtube.com/user/UniversityWaikato/playlists>



Professor Tahu Kukutai with her Whanau from Ngāti Tiipa



Professors Neil Quigley, Francis Collins and Allison Kirkman

Research

NIDEA researchers have continued to be enormously successful, evidenced both in their work on a range of funded research projects as well as in publications and calls to participate in media debates. NIDEA staff published 52 peer reviewed journal articles, 12 book chapters and 2 books in 2019; other publications include commissioned report, working papers and papers in conference proceedings. In addition, NIDEA staff gave 39 plenary or invited presentations in 2019 as well as contributing to wide range of international and national conferences. Reflecting their visibility within and impact on local, national and international debates, NIDEA staff also appeared 19 times in the media during 2019.

Integrated Data Infrastructure Lab

The IDI (Integrated Data Infrastructure) continues to be widely used among NIDEA researchers and also researchers from other faculties at the University of Waikato and outside organisations such as the Ministry of Social Development. The Data Lab adjoins NIDEA offices and provides an enormously valuable and powerful resource for exploring population change. The IDI, and our ability to access microdata in the Data Lab, have become increasingly important as a wider range of statistical data has become available and also in the context of the delayed release of the 2018 New Zealand Census of Population and Dwellings.

2019 Pathways Conference

The Capturing the Diversity Dividend in Aotearoa New Zealand (CaDDANZ) research programme organised their annual Pathways conference at Massey Universities' Albany campus on 19-20th November 2019, supported by Auckland Council and the Human Rights Commission. The theme of ARAHIA HE ARA PATHWAYS 2019 was *Diversities of migration: Racism, difference and inequalities*. The conference was officially opened with a mihi whakatau led by Apirana Pēwhairangi (Ngāti Porou) on behalf of the Massey University with Race Relations Commissioner Meng Foon responding on behalf of manuhiri. Labour MP Priyanca Radhakrishnan (Parliamentary Private Secretary for Ethnic Affairs) gave the opening address, acknowledging the benefits of working cooperatively across government, academia and community to address issues such as migration, racism, and diversity. The conference hosted 5 national and international keynote speakers, 20 presenters and 10 panellists addressing themes of racism and settler colonialism, listening as an ethical and political practice, the diversity frame, and discrimination and inequalities. The 174 enthusiastic and interactive participants came from a range of public policy, community-based and academic groups, enabling robust, critical and forward looking conversations about present challenges and the pathways to more inclusive societal futures. More information about the conference including recordings of presentations can be found at www.caddanz.org.nz.



Back row: Lars Brabyn, Aidan MacLeod, Jessica Terruhn, Paul Spoonley, Meng Foon, Geoff Stone, Kat Poi, Michael Cameron
Front row: Natalie Jackson, Emily Beausoleil, Melinda Webber, Anjum Rahman, Francis Collins, Tze Ming Mok, Camille Nakhid, Guled Mire, Arama Rata, Vanushi Walters



Collaborative Health: The University of Waikato Medical Research Centre

The University of Waikato Medical Research Centre is an initiative between the University of Waikato and the Waikato DHB. It aims to facilitate improved health outcomes in the region through clinical research. The intent is to support clinical academics to undertake research and to help answer research questions that are important to the Waikato and Midland Region and its communities.

During 2019 Dr. Ryan Paul joined the MRC team as a Senior Research Fellow. Dr. Paul is a consultant endocrinologist who has worked as a prevocational educational supervisor at the Waikato DHB from 2015 to 2018.



Dr. Ryan Paul

The Medical Research Centre are leading a wide ranging health research programme that includes activities in Cancer Research, Diabetes, Orthopaedics/Rheumatology, Rural Health and General Practice. These activities have led to demonstrated outputs.

Lung Cancer – We have an active research programme in lung cancer in conjunction with the respiratory department in Waikato Hospital and the Midland Lung Cancer Steering Group. Our team are taking a kaupapa Māori approach with our leading Māori researchers working with four Māori providers including Whakatoeha Health, Maniapoto Health Trust, Turanga Health in Gisborne and Rauawaawa Kaumātua Trust. As well as our HRC funded study we are also working with Professors Mark Elwood and Mark McKeague of Auckland University on a study of EGFR testing in lung cancer. Our current study includes the development of a substantial lung cancer database which has led to an application for a further HRC project grant. As well as our publications in this field we have supported a Māori nurse in the completion of her masters, have won a summer student scholarship to look at the use of psycho-oncology services in patients with lung cancer and are supporting a Masters student in Public Health.

Bowel Cancer – We are working with the bowel cancer team at Waikato Hospital alongside the Midland Cancer Network. We are involved in the development of a regional database of bowel cancer. Our work is supported by our HRC project grant and has resulted in a number of

presentations. This study has funded both Dr Greg Jacobsen and Dr Lyn Hunt from the Division of Science as part of the study.

Breast Cancer – We continue to work with Professor Ian Campbell on breast cancer and our joint PhD student Dr Melissa Edwards (University of Auckland) has recently submitted her PhD. This year we have been successful in attracting a Fellowship Grant for Dr Lao looking at outcomes from metastatic breast cancer. We were also successful in an HRC grant looking at the costs of breast cancer care HRC 19/488. Our expertise in breast cancer research has led to Professor Lawrenson being an invited speaker at a number of conferences and Professor Lawrenson has also been invited by Professor Diana Sarfati to co-lead an HRC programme grant investigating the role of co-morbidities in cancer care using the example of diabetes and breast cancer outcomes.

Diabetes – Dr Ryan Paul and Dr Lynne Chepulis are developing a programme of work particularly in the field of gestational diabetes and the management of type 2 diabetes in General Practice. This research has been undertaken in close collaboration with Dr Justina Wu, the Clinical Director of the Waikato Regional Diabetes Service. We have been successful in attracting funding to support this research including the appointment of a research officer Brittany Morison and a summer student. Ryan Paul is working with the University of Otago, Dr Martin de Bock who were successful in a HRC grant award of \$1,317,623.60.

Orthopaedics – in conjunction with both the orthopaedic and rheumatology departments at Waikato Hospital we have undertaken a number of studies with small grants from the Waikato Medical Research Foundation. These have looked at the costs of arthritis within New Zealand and some key components that contribute to added costs. These collaborations have led to a number of publications. We are currently hosting a research fellow in orthopaedics within the Medical research Centre at the DHB who is working with Prof Rich Masters in the School of Health and Mr Jo Baker from Waikato Hospital.

Rural health – We continue to be involved in rural health research. Professor Lawrenson is the co-supervisor of Associate Professor Garry Nixon's MD study in rural health which has now been completed. In conjunction with A/P Nixon, Professor Lawrenson is joint investigator

on an HRC project grant on rural health with Jesse Whitehead. Professor Lawrenson is co-supervisor for Jesse's PhD.



Professor Ross Lawrenson

Externally Funded Research

NIDEA's staff devote the majority of their time to research. This includes actively seeking new grant applications and on-going or new funded programmes from major external funders: Health Research Council (HRC), Ministry of Business, Innovation and Employment (MBIE), and the Marsden Fund Council. NIDEA's researchers also participate in a number of commissioned reports and consultancies. NIDEA staff have also been actively involved in the National Science Challenges (NSC), not only as collaborative research partners, but also as invited members on management panels.

Counting our Tūpuna

Marsden Fund

NIDEA Staff: Tahu Kukutai

In 2019, Professor Tahu Kukutai continued work on her Marsden Fund project 'Counting our tūpuna' which investigates the impacts of land alienation and settlement on Māori population size, structure and survivorship during the peak decades of colonisation. Working alongside Ngāti Tiipa, a Waikato hapū/iwi, the project combines family reconstitution methods, oral history, and whakapapa knowledge to try and identify all Ngāti Tīpa tūpuna (ancestors) between 1840 and 1900. It is the first attempt at full population reconstruction in Aotearoa New Zealand. Consistent with Māori data sovereignty principles, all of the data sources and interviews with kaumātua have been digitised for a digital archive to be owned and controlled

by Ngāti Tiipa. The interdisciplinary project team includes Prof Kukutai, historian Dr Nepia Mahuika, anthropologist Dr Des Kahotea, statistician Dr John Bryant, technologist Vanessa Clark, kaumātua Karu Kukutai, kaiarahi/facilitator Heeni Kani and MA student Denise Ewe. In 2019 Prof Kukutai and colleagues presented their work at: He Au Honua indigenous research conference, Hawai'i; Te Ahikōmako – the future of Maori data sovereignty; Identity conference, Wellington; AIATSIS National Indigenous Research Conference, Brisbane; Lowitja Institute international indigenous health conference, Darwin; and Hamilton Public Lecture Series. Prof Kukutai and Dr Mahuika co-edited a special issue on 'Indigenous perspectives on genealogical research' for the open access journal *Genealogy* and also wrote papers for the special issue. Dr Bryant completed simulation models of randomness of demographic events in small populations.

Promising Futures - Kia Whakapiri Mai: Bridging the home and away divide to enhance engagement

Ngā Pae o te Māramatanga Research Platform (\$259,895)

NIDEA Staff: Arama Rata

This NPM Platform Project is building an understanding on how to build stronger, more connected iwi, through enhancing engagement with Māori governance entities. Contemporary Māori governance entities are tasked with representing, supporting, and distributing resources to their members. However, these members may be disengaged, and live a great distance from entity headquarters. Current demographic trends show that the emptying of the regions in favour of the major urban centres will continue, prompting the question: how can contemporary Māori governance entities curb the legacy of colonialism and strengthen engagement with all their members, regardless of where they're living? In this platform project we are exploring, through qualitative interviews, how Māori governance entities engage with their affiliates. We are then partnering with one tribal governance entity and developing an in-depth demographic profile of the iwi they serve, based on census and iwi register data, to determine the extent of the entity's engagement with tribal affiliates. Finally we are surveying the members of our partner tribal governance entity to co-construct an engagement strategy tailored to the entity.

Impact Evaluation of the KidsCan Early Childhood Pilot Programme

KidsCan

NIDEA Staff: Polly Atatoa Carr

KidsCan is developing an initiative to extend its provision of food, clothing and health products to early childhood centres. The aim of the KidsCan programme is to “increase sustained participation at ECEs for children in material hardship by supporting families in removing the material hardship barriers to participation”. By supporting sustained participation in ECE it is hoped the children’s learning will be enhanced, which in turn should support their achievement when they go to school. The KidsCan programme in the ECE environment includes a food programme, designed in partnership with the Heart Foundation, a Health programme and clothing (particularly shoes and raincoats). In partnership with staff in Te Oranga (the School of Human Development and Counselling), Assoc. Prof Atatoa Carr is working on a summative evaluation contract to determine the value of KidsCan in the ECE setting, and also to evaluate the developmental process of this programme in order to enhance progress. This connects particularly with her research and practice considering health and wellbeing outcomes, and population child health equity, through action outside of the specific health care sector.

Nation and Migration: population mobilities, desires and state practices in 21st century

Aotearoa/New Zealand

Rutherford Discovery Fellowship, Te Apārangi Royal Society of New Zealand

NIDEA Staff: Francis Collins, Richard Bedford

In a context of increasing temporary and circular migration, there is evidence that the relationship between nation and migration is being reworked in ways that challenge our conceptions of the stability of national populations and the capacity for the state to influence national futures. This programme of research re-examines the relationship between nation and migration in this context of increasing mobility, temporariness and circularity through three studies that address the changing patterns of migration into New Zealand, the trans-Tasman mobility of New Zealanders, and the role of migration in governmental imaginings and enactments of national futures. During 2019, Francis worked with Dr. Gauri Nandedkar to undertake research for Study 1, which focuses on the aspirations, experiences and future plans of New Zealand citizens who have migrated to Australia in the last ten years. Over 60 interviews were undertaken in Brisbane/Gold Coast, Perth and Sydney, providing insight into the complexities of migration within the trans-Tasman free movement space and the socio-political position of New Zealand migrants in Australia. Working with Dr.

Sandy Lee and Associate Professor Rachel Simon-Kumar (both University of Auckland) research on the development and translation of diversity and equity policies in a District Health Board was also completed in 2019. Working with Associate Professor Alan Gamlen (Monash University) since late 2019, work has now begun on interviews with all former Ministers of Immigration in New Zealand since 1984, research that will seek to uncover the making and meaning of migration policy over three decades of significant change in Aotearoa New Zealand.

Drivers of Temporary Migrant Worker Exploitation

MBIE Contract Research

NIDEA Staff: Francis Collins

In 2019, Francis Collins worked with Christina Stringer (University of Auckland) to undertake contract research on behalf of the Ministry of Business, Innovation and Employment to explore the drivers and implications of temporary migrant worker exploitation in Aotearoa New Zealand. Migrant exploitation is the unjust and often illegal utilisation of migrants for the extraction of profit in a range of circumstances including in labour, accommodation, provision of migration services, and education, amongst others. For this research, we were tasked with providing an understanding of what the exploitation of temporary migrant workers looks like in New Zealand. In particular, we were asked to explore the nature, drivers and consequences of exploitation from the perspective of migrants and other key stakeholders. We were also tasked with identifying effective interventions to mitigate the vulnerability of temporary migrant workers. The research encompassed over 130 interviews with migrants, employers, industry representatives, migration agents, unions, community leaders, migrant representatives, and lawyers across New Zealand. Our focus was on understanding the supply side dynamics of exploitation, the way in which demand side pressures influence exploitation in the workplace and the pathways to lead migrants to be vulnerable to being exploited. The final report from the research was completed in July 2019 and published by MBIE in October 2019. The findings contributed to the development of policy proposals to reduce the workplace exploitation of temporary migrants and has featured significantly in media and public discourse on this issue in the months since completion. In late 2019, Christina and Francis prepared a proposal to the MBIE Endeavour Smart Ideas Fund building off this research in order to develop a Migrant Worker Empowerment Toolkit (outcome of application due in May and September 2020). In 2020, Christina and Francis are working to develop publications that draw on the insights of the research. The final report can be accessed here:

<https://www.mbie.govt.nz/dmsdocument/7109-temporary-migrant-worker-exploitation-in-new-zealand>

CaDDANZ: Capturing the Diversity Dividend of Aotearoa/New Zealand

Ministry of Business Innovation and Employment Endeavour Fund

NIDEA Staff, Associates and Affiliates: Francis Collins (Science Leader), Tahu Kukutai (Key Researcher), Arama Rata (Key Researcher), Renae Dixon (Project Manager)

NIDEA Associates and Affiliates: Lars Brabyn (Key Researcher), Michael Cameron (Key Researcher), Natalie Jackson (Key Researcher), Dave Mare (Key Researcher)

CaDDANZ investigates how Aotearoa New Zealand can better prepare for, capture and maximise the benefits of an increasingly diverse population. The research measures, maps and analyses the complex societal impacts of diversity and the implications for businesses, households and communities of mobility, migration, indigeneity, ethnic identity, demographic change (including structural ageing and fertility) and urban/regional disparities. A significant component of the research is concerned with the implications of diversity for Māori and with how Māori engage with diversity. The research programme is comprehensive, multi-phased and organised around three themes: ethno-demographic diversity; societal impacts and opportunities; and institutional implications and responses. More information about the project can be found at www.caddanz.org.nz

Throughout 2019, CaDDANZ researchers have been very active in conducting research and disseminating their findings through a number of channels. In total, the team have produced 12 peer reviewed journal articles, 20 books or book chapters, and delivered 28 keynote presentations at various conferences. The uptake of this research has been evident in our interaction with various groups. In March, the team was hosted by MBIE in Wellington where our research was shared with an audience of 80 people, which included policy makers from a range of Ministries and public offices. The team have also contributed a suite of nine publications to fulfil a Special Edition of the *New Zealand Population Review* which was released in December. This can be found at <https://population.org.nz/latest-journals/>. Pathways was another key achievement for the team in 2019. Arahia He Ara: Pathways 2019 was held at Massey Universities' Albany campus on 19-20th November. This conference hosted 38 presenters and panellists who came together to seek pathways to address the challenges of racism, settler colonialism and inequalities. The enthusiastic and interactive crowd of 174 people came from a range of public policy, community-based and academic groups, enabling

robust, critical and forward looking conversations about present challenges and the pathways to more inclusive societal futures. With the conclusion of CaDDANZ on the horizon in late 2020, the team are looking forward to sharing our overarching findings which will be a key feature of the forthcoming meta-synthesis.

What are the housing-related experiences of families with young children in New Zealand today?

Ministry of Social Development: Children and Families Research Fund

NIDEA Staff: Polly Atatoa Carr

This research involves a partnership between Associate Professor Polly Atatoa Carr, the Growing Up in New Zealand (GUiNZ) team at the University of Auckland and Housing New Zealand (HNZ) to combine expertise, administrative and GUiNZ data and analytics to better understand the housing environment New Zealand children experience, particularly those in rental accommodation and in low income families.

The overarching aim is to determine the housing-related environment for families with young children in New Zealand throughout the critical early years, drawing on information (on housing tenure, child context, and child and whānau outcomes) collected throughout the first seven years of the GUiNZ longitudinal study. Associate Professor Atatoa Carr was the Associate Director of GUiNZ prior to moving to NIDEA, and remains the lead investigator of the Culture and Identity Domain of this significant multidisciplinary research programme.

This research connects to Associate Professor Atatoa Carr's, and NIDEA's, research focus on the societal, community, cultural and environmental context of population outcomes, health equity, and research translation into policy and programme outcomes through partnership with community agencies such as Housing New Zealand.

Mana Whenua Building Vibrant Communities

Building Better Homes Towns and Cities National Science Challenge, MBIE

NIDEA Staff: Jonathan Kilgour, Moana Rarere

This project is developing a Māori and mana whenua perspective of regeneration in regional Aotearoa New Zealand. The study is specifically focused on three North Island towns: Pōkeno, Huntly/ Rāhui Pōkeka and Ōpōtiki. This project forms one of several projects that support success in regional settlements and has been comprised of an interdisciplinary project team including Jonathan Kilgour, Dr John Ryks, James Whetu, Amy Whetu, Associate Professor Polly Atatoa Carr, Thalia Ullrich, Maui Hudson, Moana Rarere, Jesse Whitehead and Lynley Uerata.

In 2018, the project team completed an exploratory indicator framework for measuring regeneration in regional settlements and community engagement in each of the three place-based study sites. The exploratory framework has been published in the New Zealand Population Review and presented to the New Zealand Geographical Society/Institute of Australian Geographers' Conference and the Regional Studies Association Conference. Our team has provided advice to participating mana whenua groups on potential pathways to realise development aspirations in their towns and communities. Phase one of this project was completed in June 2019, with proposals developed for a phase two research programme which is due to begin in April 2020.

The study findings emphasise the importance of Māori and mana whenua perspectives in regional development, regeneration and wellbeing conversations. It also, like other projects in the Challenge, confirms the importance of cultural, social and human capitals to regional development. Meanwhile policy and planning frameworks often reduce the regenerative capacities of regional towns as they often do not appropriately provide for the aspirations of local communities. Through this project, and future research, the aim is to work with communities to build community capabilities to achieve their aspirations and to develop tools to address barriers to mana whenua and community development.

Does a Whānau Ora approach improve outcomes for hospitalised tamariki?

Health Research Council Rangahau Hauora Māori

NIDEA Staff: Polly Atatoa Carr, Rebekah Graham

This research aims to measure the impact of a comprehensive and holistic Māori approach to assessing and addressing needs for children and their whānau within the paediatric department at Waikato District Health Board (DHB). The proposal builds on the existing collaboration between NIDEA, Te Puna Oranga (Māori Health) at the DHB, and Waikids, and involves Dr Bridgette Masters-Awatere in Community Psychology at the University of Waikato. A Whānau Ora assessment instrument (the Harti Hauora Tamariki, HHT) tool has been developed, and currently paediatric patients and their whānau are being randomised into the HHT intervention in order to determine the level of unmet need identified and assess the ability of the HHT to improved whānau outcomes and reduce hospital readmissions for tamariki Māori. In 2018 Drs Masters-Awatere and Graham conducted qualitative interviews of whānau with children who had required a hospital admission, and further assessment of their narrative; the quantitative impact assessment of the HHT tool is expected in 2019.

Costs of Breast Cancer

Health Research Council Breast Cancer Foundation

NIDEA Staff (Medical Research Centre): Chunhuan Lao, Ross Lawrenson

Breast cancer is the most common cancer in women in New Zealand, and the incidence has been increasing steadily. The growing incidence has placed a substantial economic burden on the healthcare system. The Ministry of Health demonstrated that breast cancer is the most expensive cancer to treat at \$76.8 million a year excluding the \$42 million a year of running BreastScreen Aotearoa. In 2008, the mean price per case of breast cancer was estimated to be \$28,074. This report was produced based on the 2008 data when patients received less effective chemotherapy treatment compared to the current regimes. This report estimated the economic burden of all cancers in New Zealand but lacks detailed information for breast cancer. An up-to-date and more detailed report of the costs associated with breast cancer is needed.

Variations in the management and outcomes of women with metastatic breast cancer

Breast Cancer Foundation

NIDEA Staff (Medical Research Centre): Chunhuan Lao

There are great variations in the clinical course (including pattern of metastatic spread), treatment and outcomes of women with metastatic breast cancer. This project aims to 1) demonstrate the management and outcomes of women with metastatic breast cancer, 2) examine the influence of age, comorbidities, social deprivation and ethnicity, and 3) explore the difference between women with de novo metastatic breast cancer and women with recurrent metastatic disease. This is a record linkage study using the Combined Breast Cancer Register (CBCR), Pharmaceutical Collection (PHARMS), National Minimum Dataset and Mortality collection. The study population will include women with de novo metastatic breast cancer (1600 women) and women with recurrent metastatic breast cancer (4000 women) in 2010-17.

Geographic and ethnic disparities, and costs of osteoarthritis associated hip and knee replacements surgeries in NZ

Lottery Health research Grant

NIDEA staff (Medical Research Centre): Chunhuan Lao

The project will explore the regional and ethnic disparities in rates of osteoarthritis associated hip and knee replacement surgeries, and will estimate the mortality ratio between these patients and the general population using the national datasets. This project will also estimate the costs of osteoarthritis related hip and knee replacement surgeries in New Zealand and to identify the factors that are relevant to the elevated costs.

Barriers to Screening for Diabetes in Pregnancy in the Waikato Region

Waikato Medical Research Foundation

NIDEA Staff (Medical Research Centre): Lynne Chepulis, Ryan Paul and Brittany

Morison

Diabetes in pregnancy (DiP) is associated with complications for both mother and child, and current statistics suggest that 1 in 11 pregnancies in New Zealand are affected, including a disproportionate number of Māori. However, until recently in New Zealand screening for DiP has varied widely in opinion and practice, and little is currently known about the adherence to Ministry screening guidelines, nor what the barriers / enablers are that prevent / allow for screening and timely diagnosis. This is a mixed methods study which aims to comprehensively

evaluate screening for DiP in Waikato women using laboratory data for a cohort of up to 5000 Waikato women along with a series of semi-structured interviews with women and healthcare providers about their screening knowledge and experience.

Automated insulin delivery for type 1 diabetes utilising open-source technology” Health Research Council

NIDEA staff (Medical Research Centre): Ryan Paul and Martin de Bock (PI - Otago)

Automated insulin delivery (or closed loop technology) for type 1 diabetes has heralded a new era of treatment, delivering improved glucose management and quality of life. While commercial systems are existent overseas, cost will be an ongoing barrier to access this technology in New Zealand. However, an open access automated insulin delivery algorithm has been in development for years, but has previously required "hacking" of commercial insulin pumps, causing medicolegal concerns. A recent insulin pump innovation has opened the opportunity to utilize the open access technology, letting patients "close the loop" without voiding their insulin pump warranty. In this project we will compare glycaemic control, quality of life and health economics of this technology compared to standard insulin pump therapy in a multi-centred randomised controlled trial, in both children and adults with type 1 diabetes. Positive findings will lay the foundation for New Zealanders to access this life changing technology.

Cultural Competency and equity focused activities in primary care

Health Research Council

NIDEA Staff (Medical research centre): Rawiri Keenan

Dr Keenan is looking at cultural competency and equity in primary care and has the Foxley Fellowship. He started in Feb 2019 for two years. The research proposal says cultural competence is a skill and attitude essential to effective communication and therefore effective quality care. This is especially true in primary care/ general practice. All GP practices and staff in them have obligations for ongoing training and education in the areas of Cultural Competence and Treaty of Waitangi training. Additionally, all practices must have a Māori health plan. This project will review these activities reported on by GPs and practice staff as part of practice accreditation. It also looks at associated learning activities which form part of the GP training programme. Reviewing these activities will inform future recommendations on the training requirements of primary care teams.

Exploring Muslim migrant women's experiences of accessing primary healthcare

Waikato Medical Research Foundation Early Career Researcher grant

NIDEA Staff (Medical Research centre): Shemana Cassim, Ross Lawrenson, Rawiri Keenan

This project will explore the experiences of Muslim migrant women in accessing primary healthcare. We aim to investigate how their navigation of a predominantly 'Westernised' primary healthcare system can affect the wellbeing of these Muslim migrant women, and explore the broader implications of the barriers or enablers they may encounter.

Effects of the gut microbiome in the progression of gestational diabetes to type 2 diabetes

Paykel Trust and Sanofi

NIDEA Staff (Medical Research Centre): Lynne Chepulis and Brittany Morison

Gestational diabetes (diabetes during pregnancy) affects up to 7% of New Zealand women and has health implications for both mother and child. For both, these include an increased likelihood of developing obesity, diabetes and other metabolic disease. Currently, little is known about why certain women are predisposed to develop gestational diabetes, nor why children born to these mothers also carry a higher risk of metabolic disease. However, a growing number of studies has suggested that there is a strong correlation between the types of bacteria present in the gut of these women and disease development. Thus, this study is evaluating changes in the gut microflora populations during pregnancy of women with gestational diabetes and comparing it to that seen in healthy pregnant women. Secondly, we are measuring the gut microflora of babies newly born to these women to determine if a mother's microflora pattern is passed onto her child. Our aim is that this information can be used to inform a future study to evaluate how gut bacteria populations can be altered (ie with probiotics and/or specific antibiotics), as a means of influencing outcomes of the disease.

Internally Funded Research

Changes in the Gut Microbiome in gestational diabetes

FASS contestable research grant:

NIDEA Staff (Medical Research Centre): Lynne Chepulis

This study is evaluating changes in the gut microflora populations during pregnancy of women with gestational diabetes and comparing it to that seen in healthy pregnant women. Secondly, we are measuring the gut microflora of babies newly born to these women to determine if a mother's microflora pattern is passed onto her child. Our aim is that this information can be used to inform a future study to evaluate how gut bacteria populations can be altered (ie with probiotics and/or specific antibiotics), as a means of influencing outcomes of the disease.

Identifying barriers to glycaemic control in rural patients with type 2 diabetes mellitus in the Waikato region

University of Waikato Strategic Investment Fund (2019)

NIDEA Staff: Ross Lawrenson, Lynne Chepulis, Chunhuan Lao

Type 2 diabetes (T2D) currently affects approximately 7% of all New Zealand adults, and these patients are generally managed in primary care, with input from specialist secondary care for diagnosis and treatment of disease complications. Currently, we know little about how well diabetes is managed in primary care, including how many patients complete the available Diabetes Annual Review that evaluates blood glucose control, disease risk factors and progression each year. This study will collect data from 15 general practices in the Waikato (including rural and urban) to quantify how glycaemic control and management of diabetes in primary care differs by patient age, gender, ethnicity, socioeconomic status and practice location. We will also undertake a qualitative study to evaluate what the patient-perceived barriers are towards appropriate diabetes care and self-management.

The Effect of Civil War and Forced Displacement on Syrian Refugees' Key Life Course Transitions

University of Waikato Strategic Investment Fund

NIDEA Staff: Yara Jarallah (Primary Investigator)

To date, no research has been able to investigate the effect of war and forced displacement on key life course transitions of refugees due to lack of data. This project fills this gap by piloting the use of Life History Calendars (LHCs) to collect such data from the recently arrived Syrian Refugee Population in New Zealand (Dunedin). By focusing on the period of young adulthood— a period critical for human capital accumulation, the project is able to identify potential pathways that link civil war with marital and family formation behaviour through disruption to human capital formation in the form of school drop-out, unemployment, and displacement. Understanding this link improves our ability to tailor government programs where they are most needed especially considering evidence from non-refugee populations on the generational disadvantage and the intergenerational transmission of disadvantage from loss of human capital.

Monitoring and Evaluation of the Multicultural Affairs and Social Cohesion Division's (MASC) Family Violence Work Package (2018-2021)

Victorian Department of Premier and Cabinet

NIDEA Staff: Yara Jarallah (with Karen Block, Cathy Vaughan, Humaira Maheen, and Meghan Bohren from the University of Melbourne)

The overarching goal of the MASC Family Violence package is to promote safety from violence for women and families from culturally and linguistically diverse backgrounds. This project will develop, guide and oversee implementation of an overarching evaluation of the Family Violence Work package.

Faith Communities Supporting Healthy Family Relationships: a Participatory Action Research Project with the Multifaith Advisory Group (2018-2020)

Victorian Department of Premier and Cabinet

NIDEA Staff: Yara Jarallah (with Cathy Vaughan, Adele Murdolo, Humaira Maheen, Meghan Bohren, Regina Quiazon, Karen Block from the University of Melbourne and the Multicultural Centre for Women's Health)

This is a Participatory Action Research that involves two overarching phases- 1) a synthesis of the current evidence on promising and emerging practices related to building capacity of faith based organisations, faith communities and faith leaders to achieve social change to effectively prevent and respond to family violence and violence against women; and 2) support specified faith communities to translate evidence from phase (1) into a leadership capacity building initiative.

The MuSeS Project: Multicultural and Settlement Services Supporting Women Experiencing Violence (2017-2020)

Australia's National Research Organisation for Women's Safety (ANROWS)

NIDEA Staff: Yara Jarallah (with Cathy Vaughan, Adele Murdolo, Regina Quiazon, Linda Murray, Lana Zannettino from the University of Melbourne, the Multicultural Centre for Women's Health, University of Tasmania and Flinders University)

This is a mixed methods project conducted in six geographic communities across three Australian states: South Australia, Tasmania and Victoria. It is conducted in partnership with the Victorian Foundation for the Survivors of Torture (Foundation House), Australian Red Cross, AMES Australia, and Australian Migration Resource Centre to inform strategies to supporting women experiencing family violence through multicultural and settlement services, including through specialist services for refugees who have experienced torture and trauma.

Popoia te kākano kia puawai: Family structure, family change and the wellbeing of tamariki Māori

Commissioned by Ministry of Social Development. 2019

NIDEA Staff: Tahu Kukutai (PI), Polly Atatoa-Carr, Arama Rata.

Using data from the New Zealand Longitudinal Census and Growing Up in New Zealand, this report examines family structure and change for tamariki Māori, and their potential impacts on early childhood development and wellbeing. This is the fifth report that NIDEA has produced for the whānau wellbeing research programme that was established at Superu and is now led by MSD. Other reports have used data from the NZ Census and Te Kupenga wellbeing survey to examine whānau wellbeing indicators, concepts of whānau, self-reported whānau wellbeing, and housing quality.

Ngāti Hāua. A demographic profile from the Census of Population and Dwellings.

Commissioned by Ngāti Hāua Iwi Trust. (PI). 2019

NIDEA Staff: Tahu Kukutai, Shefali Pawar

Ngāti Hāua. Register-based population projections.

Commissioned by Ngāti Hāua Iwi Trust. (PI). 2019

NIDEA Staff: Tahu Kukutai

Statistical analysis to support report on removal of pēpi Māori into state care

Commissioned by the Office of the Children's Commissioner

NIDEA Staff: Tahu Kukutai, Shefali Pawar

NIDEA Students and Graduates

NIDEA is committed to capacity building through teaching, supervision and the provision of meaningful research opportunities for students. The core second year Population Studies undergraduate paper continues to attract a substantial number of students, including those seeking to major in Population Studies as well as students from across the BSocSci, BA and BEnvPlan. The PhD programme at NIDEA has also continued to grow, reaching 12 PhD candidates based in NIDEA and seven based in other units but supervised by NIDEA staff. In 2019 and early 2020, six new PhD students joined NIDEA, John Natua (supervised by Polly Atatoa Carr and John Oetzel, Management), Zohirul Islam (supervised by Francis Collins and Arama Rata), Joke Methorst (supervised by Francis Collins and Lynda Johnston, Geography), Love Umesi (supervised by Tahu Kukutai, Yara Jarallah and Ian Pool), Sandrine Charvin-Fabre (supervised by Ross Lawrenson and Otilie Stolte, Psychology), and Kimberley Norman (supervised by Ross Lawrenson, Lynne Chepulis and Lisette Burrows, Health).

Achievements

Omoniyi Alimi graduated with his PhD in 2019 for a thesis focused on *Inequality within and between New Zealand Urban Areas*. Niyi is now working as a Teaching Fellow in the Waikato Management School and continues to collaborate with NIDEA staff on research project development and publications.

Moana Rarere won the inaugural Population Association of New Zealand Newell Award as well as the People's Choice Award for best poster at the 2019 New Zealand Population Conference.

Jesse Whitehead won the 2019 Statistics New Zealand Jacoby Prize, which was presented at the Population Association of New Zealand conference in June 2019.

Dr Ryan Paul was awarded the 2019 New Zealand Clinical Educator of the Year by the NZ Medical Council.

Postgraduate Completions

Renae Dixon (MSocSci), Thesis Title, "Attitudes towards immigrants and immigration: A narrative review"

Omoniyi Alimi (PhD), Thesis Title : "Inequality within and between New Zealand Urban Areas"



Moana Rarere, recipient of People's choice award for PANZ Newell poster. Moana is pictured with Peter Newell



Jessie Whitehead, recipient of Statistics New Zealand Jacoby Prize. Jessie is pictured with Liz MacPherson, Chief Statistician

Masters Supervision

Francis Collins

Renae Dixon (Master of Social Sciences, Demography) (Completed, 2019)

- Topic: Attitudes towards immigrants and immigration: A narrative review
- CaDDANZ Research Study Grant recipient

Jonathan Kilgour

Alysha Reti (Master of Business Administration, Management)

- Topic: What is whanau transformation through education?

Ross Lawrenson

Dave Greenslade (Masters of Demography)

- Topic: To establish existing dementia prevalence rates within New Zealand

Dr Chloe Corbett (Masters of Public Health, University of Auckland)

- Topic: Factors determining ethnic differences in lung cancer survival outcomes in the Midland region.

Dr Rawiri Keenan

- Topic: Cultural Competence and Equity focussed activities in Primary Care

PhD Supervision

Polly Atatoa Carr

Carole McMinn (PhD in Population Studies)

- Topic: Homeless Families of Hamilton: Exposing the Invisible Homeless of Hamilton and Their Journey to Sustained Tenancies Under a Housing First Approach
- Supported through PhD Scholarship as part of the MBIE funding “Housing First” research programme

John Natua (PhD in Population Studies)

- Topic: Understanding drivers towards better health and wellbeing for Cook Island families in the Waikato and Midland regions

Renee Shum (PhD in Population Studies)

- Topic: Geographies of Homelessness: A case study of The People’s Project
Supported through the MBIE funding “Housing First” research programme

Jesse Whitehead (PhD in Population Studies)

- Topic: Are General Practitioner Services Spatially Equitable and Sustainable in the Waikato District Health Board Region?
- Statistics New Zealand Jacoby Prize
- New Zealand Rural General Practice Network Study Grant
- Contributed to successful HRC grant application (19/488: A rural-urban classification for NZ health research and policy)
- Presented at following conferences:
 - NZ Rural Health Conference
 - IUHPE World Conference on Health Promotion
 - International Medical Geography Conference
 - ALPSS conference
- Invited to give guest lecture at Kaikoura Rural Health Hui: "The sustainability of GP services in the Waikato DHB - a mixed methods approach"

Megan Lenny (PhD in Psychology; Supervised with Nicola Starkey and Cate Curtis)

- Topic: Understanding the adolescent experience of self-harm

Francis Collins

Kate Sewell (PhD in Geography)

- Topic: Realising Inclusion within Urban Regeneration Policy and Practice: the role of diverse perceptions, experiences and expectations
- University of Waikato Doctoral Scholarship recipient

Joke Methorst (PhD in Geography)

- Topic: Researching the effects of digital nomadism on local culture and place. Taking a local perspective to research the emerging global phenomenon in the light of postmodernism.
- University of Waikato Doctoral Scholarship recipient

Zohirul Islam (PhD in Population Studies); co-supervised by Dr. Arama Rata

- Topic: Migration and Inequality
- University of Waikato Doctoral Scholarship recipient

Rachael Boswell (PhD in Geography, University of Auckland)

- Topic: The role of artist's creative spatial practices in urban regeneration after disasters

Harry Shi (PhD in Geography, University of Auckland)

- Topic: Cooking desires, living aspirations: the migration and everyday life of Chinese chefs in Auckland, New Zealand
- Funded by PhD Scholarship from *Nation and Migration* research programme

Sarah Jane Lipura (PhD in Asian Studies, University of Auckland)

- Topic: Imagining the Periphery and Desiring to Become: Korean Student Mobility in Non-Traditional Study Destinations in Asia Pacific
- University of Auckland Doctoral Scholarship recipient

Tahu Kukutai

Patrick Broman (PhD, Demography).

- Topic: In pursuit of the 'we': Analysing demographic 'New Zealandness'
- University of Waikato Doctoral Scholarship recipient

Desi Rodriguez-Lonebear (Dual PhD: Demography, University of Waikato; Sociology, University of Arizona).

- Topic: Data for sovereignty: Counting and classifying tribal identity
- University of Waikato Doctoral Scholarship recipient
- Robert Woods Foundation Healthy Policy Research Scholars Programme
- American Sociological Association Minority Fellowship Programme

Moana Rarere (PhD, Demography).

- Topic: Māori fertility patterns and whānau formation in the 21st century.
- (2019, June). The People's Choice Award for the 2019 Population Association of New Zealand Newell poster
- (2019, June). The Population Association of New Zealand Newell Award.
- (2018, November). Rangahau Māori Award.

Prabin Shakya (PhD, Demography).

- Topic: Premarital sexual behaviour of adolescents in Nepal.
- University of Waikato Doctoral Scholarship recipient

Love Umesi (PhD, Demography); (co-supervised by Yara Jarallah and Ian Pool).

- Topic: Underlying and state-level Contextual causes of early childhood mortality in Nigeria.
- University of Waikato Doctoral Scholarship recipient

Maxine Ketu (MBA).

- Topic: Whatungarongaro te tangata, toitū te whenua. Strengthening ties between taiohi and whenua Māori in Taumarunui

Ross Lawrenson

Jesse Whitehead (PhD in Population Studies)

- Topic: Are General Practitioner Services Spatially Equitable and Sustainable in the Waikato District Health Board Region?

Sandrine Charvin-Fabre

- Topic: Homelessness and access palliative care in NZ

Garry Nixon (MD, University of Otago)

- Topic: Improving Access to Diagnostic Testing for Rural Communities in Aotearoa/NZ

Melissa Edwards PhD (University of Auckland)

- The influence of comorbidity on breast cancer care and outcomes in NZ

Lynne Chepulis

Malgorzata Hirsz (PhD in Health Development and Policy)

- Topic: How can we improve time to diagnosis of colorectal cancer in symptomatic patients? Symptoms and patient characteristics as criteria for diagnosis of colorectal cancer in primary and secondary care in New Zealand

Jacques Poot

Omoniyi Alimi, (completed, 2019)

- Topic: Inequality Within and Between New Zealand Urban Areas.

Mohana Mondal (PhD in Economics)

- Topic: Future Spatial Distribution of Ethnicity in Auckland

Elective Medical Placement

Dong Hyun Kim, University of Auckland (6th Year medical student, 10 week Elective)

- Topic: The prevalence of cancer in general practice; a pilot study

Summer Scholarship Programme 2018-2019

NIDEA researchers are committed to building research capacity and are keen supporters of the University of Waikato's Summer Scholarship programme. In some years, a few scholarships are co-funded by the NIDEA Research Trust Account; others are co-funded by external organisations

Summer Scholars were taken on by the Medical Research Centre –

Christopher Mayo – is an Auckland medical school student. He is currently undertaking his second summer studentship with our team. Previously looking at on referral pathways for Waikato CRC patients – data from dendrite and now currently working on “Glycaemic control in rural verses urban patients with Type II diabetes mellitus in Waikato region.

Nicola Paul is a second year bachelor of social science student, University of Waikato who is working on a project looking at post treatment of psycho-social needs for cancer patients in the Waikato.

Valentina Papa is working on diabetes project looking at Barriers and Enablers to Screening for Diabetes in Pregnancy in the Waikato.

Josh Fellingham is a Honours student at the University of Waikato and worked with Shemana and Ross on our lung cancer project designing a website for improving awareness of lung health (University of Waikato student)

Chris Wang is an Auckland medical school student. He worked with Dr Ryan Paul looking at glycaemic control in inpatients with diabetes at Waikato DHB.

Varun Vartak is a student with University of Auckland who worked with Dr Ryan Paul looking at strategies for glycaemia control in exercise with patients having Type 1 diabetes.

Professional and Editorial Roles

Polly Atatoa Carr:

- Member of HRC Science Advisory Committee (meeting Sept 2018)
- Member, Waikato Medical Research Foundation Grants Committee
- Member, Steering Group, NZ Child and Youth Epidemiology Service
- Advisory Board Member, Racism, Discrimination and Stigma work programme - Child and Youth Wellbeing Strategy
- Member, Anglican Action Trust Board

Richard Bedford

- President, Royal Society Te Apārangi (to July 2018)
- Chair, Governance Group, Building Better Homes, Towns and Cities National Science Challenge (MBIE and BRANZ)
- Chair, Health Research Priorities Development Group (HRC)
- Chair, 2018 Census External Data Quality Panel (Stats NZ)
- Member, Auckland War Memorial Museum Trust Board
- Member, Antarctic Heritage Trust

Francis Collins

- Human Geography Editor, *New Zealand Geographer*
- Section Editor, *International Encyclopedia of Human Geography* (2nd Edition)
- Series Editor, *Pacific Rim Geographies* book series (Routledge)
- Series Editor, *Global Migration in the Asia-Pacific* book series (Anthem Press)
- Editorial Board, *Social and Cultural Geography*
- Editorial Board, *Asian and Pacific Migration Journal*
- Advisory Board Member, Constructing Transnational Spaces of Higher Education Research Project (Leibniz Institute for Research on Society and Space)
- Advisory Board Member, Youth Mobilities, Aspirations & Pathways Project (Australian Research Council)

Tahu Kukutai

- Member, Chief Science Advisor Forum
- Member, Census 2018 Census External Data Quality Panel
- Member, Child Wellbeing Strategy Reference Group, Department Prime Minister and Cabinet
- Member, Health Research Council of New Zealand Ethics Committee
- Co-Chair, Research Data Alliance – International Indigenous Data Sovereignty Interest Group
- Member, Technical Advisory Group to Iwi Data Leadership Group, Iwi Chairs Forum
- Editor, *New Zealand Population Review*
- Founding member, Te Mana Raraunga Māori Data sovereignty Network
- Founding member, Global Indigenous Data Alliance

Ross Lawrenson

- Member, National Lung Cancer Work Group meeting
- Chair, Hamilton Science Awards
- Member, BHealth Advisory Group
- Chair, Research Advisory Group (Waikato DHB)
- Chair, Waikato Postgraduate Medical Inc Executive
- Member, Breast Cancer NZ Register Trust, Clinical Advisory Group (CAG)
- Population Advisor, Strategy and funding, Waikato DHB
- Member, Medical Advisory Committee (Waikato DHB)
- Member, Waikato Health Memorabilia Trust
- Board Member, PHARMAC
- Member, MOH Cancer Information Strategy Board
- Member, NZ Rural GP Network

Jonathan Kilgour

- Regional Co-ordinator, Asia-Pacific Network, Human Development and Capability Association.

Arama Rata

- Waikato-Tainui Kōiora Strategy Panel member
- NZRIS Funder-Researcher Working Group
- New Zealand Alternative, Steering Group
- MAI Journal, Board of Editors
- current: Māori Association of Social Science, Committee Member

Yara Jarallah

- Honorary Research Fellow, Centre for Health Equity, Melbourne School of Population and Global Health, University of Melbourne
- Honorary Research Fellow, Australian Research Council Centre of Excellence for Children and Families over the Lifecourse, University of Queensland.
- Member, Lancet Palestinian Health Alliance
- Member, Public Health in the Arab World

Jacques Poot

- Member, European Science Foundation College of Expert Reviewers
- Lead Assessor, New Zealand Ministry of Business, Innovation and Employment (MBIE) Endeavour Fund applications (Smart Ideas and Research Programme)
- Section Editor, “Regional economic growth” Handbook of Regional Science, Springer Verlag
- Vice-President, Jury for the European Regional Science Association (ERSA) prize.
- Journal Editor, special issue of *Journal of Geographical Systems* on Spatial Demography in Regional Science.
- Visiting Professor, Department of Spatial Economics, School of Business and Economics, Vrije Universiteit Amsterdam, The Netherlands
- Appointed Honorary Professor, School of Accounting, Finance & Economics (SAFE), University of Waikato (July 2019 – June 2021)

Rawiri Keenan

- Member, Health Quality and Safety Commission Patient Experience of Care Governance Group
- Member, Medical Council of New Zealand - Cultural Competence, Partnership and Health Equity Advisory Group
- Executive member, Te Akoranga a Māui; Māori representative group for Royal New Zealand College of General Practitioners
- Treasurer, Royal New Zealand College of General Practitioners Waikato/ Bay of Plenty Faculty

Ryan Paul

- President of the New Zealand Society of Endocrinology (NZSE)
- Member, Clinical Associate Maurice Wilkins Centre
- Member, RACP New Zealand Endocrinology Advanced Training Subcommittee
- Member, New Zealand Society for the Study of Diabetes Executive Member
- Member, National Transition Project Member for Diabetes in New Zealand.
- Member, DESA Committee Member
- Chair, NZSE Clinical Meeting Conference Committee
- Clinical Advisor, Diabetes and Eating Disorders Awareness

Guest Lectures

Shemana Cassim

- Narrative Research, PSYCH307 Research Methods, School of Psychology, University of Waikato
- Qualitative interviews & data analysis, PSYCH307 Research Methods, School of Psychology, University of Waikato
- Conducting Research in an Indigenous Setting, PSYCH307 Research Methods, School of Psychology, University of Waikato
- Migration, acculturation & settlement, 175.201 Social Psychology, Massey University (Albany)

Ross Lawrenson

- Rural Health for Public Health Registrar forum (May 2019)

- Public Health Paper on Health Well-Being (Guest Lecture for Katrina Roen) 17 Sept, 2019
- Rural Health lecture, POPS508 Population Health class - (Guest Lecture for Polly Atatoa-Carr) 24 Sept, 2019

Keynote Addresses, Plenary and Invited Presentations, Discussants

- Atatoa Carr, P.** 2019. Invited keynote, Pacific Data Sovereignty, Moana Research Symposium, 29th November
- Atatoa Carr, P.** 2019. Invited presenter, Waikato District Health Board Grand Round 28th Feb
- Atatoa Carr, P.** 2019. Invited presenter, Ministry of Housing and Urban Development, Wellington, 12th Dec: "The Peoples Project Research Group on Homelessness"
- Chepulis, L.** 2019. Invited presenter NZ Society for the Study of Diabetes annual conference, Napier, May 7-10, 2019.
- Collins, F.** 2019. Invited panellist. Geographies of Globalising Higher Education. Leibniz Institute for Research on Society and Space, Berlin, 10-11 January 2019.
- Collins, F.** 2019. Invited presenter. Educational migration: Youth, time and transformation. Reproduction Migrations in the Asia Pacific, University of Oxford, 04 March.
- Collins, F.** 2019. Invited presenter. Provisional Migration and Settler Colonialism in Aotearoa/New Zealand. Sussex Centre for Migration Research, 07 March.
- Collins, F.** 2019. Invited presenter. Migration Policy, Patterns and Implications 17th Annual Immigration Law Conference, 6 June.
- Collins, F.** 2019. Plenary Panel, 'Understanding New Zealand's Diverse Population in the 21st Century: Opportunities and Challenges'. Population Association of New Zealand Conference, 20-21 June.
- Collins, F.** and Friesen, W. 2019. Invited presenter. Broken City to Future Multicultural? The Temporalities of Diversification, Migration and Re-Urbanisation in Post-Quake Christchurch. International Conference on Migrant-led Diversification and Differential Inclusion in Arrival Cities across Asia, National University of Singapore.
- Jarallah, Y.** 2019. Invited Presentation. Marriage and Fertility under Military Occupation: A Study of the West Bank of Palestine. *School of Geography Seminar Series, Semester 1, 2019*, The University of Melbourne, Australia, April 9 2019.

- Keenan, R.** (2019) Whanaungatanga. Academic GP & Primary Health Care Symposium. Hamilton. 21st September 21
- Keenan, R.** (2019) Culturally Safe Practice in Action. MCNZ and Te Ora Joint symposium on cultural safety. Wellington, 25th June.
<https://www.mcnz.org.nz/assets/standards/CulturalCompetence/f8adaa73fa/CCPHE-symposium-booklet.pdf>
- Kukutai, T.** 2019. Invited speaker. Waikato District Health Board. Indigenous and Māori data sovereignty, Hamilton, 28 November.
- Kukutai, T.** 2019. Critical demography: Race, colonialism and population. Invited presentation. Institute of Judicial Studies workshop on diversity for New Zealand's judiciary, Wellington, 21 November.
- Kukutai, T.** 2019. Invited presentation. Community Research webinar. Māori, Census 2018 and data sovereignty. 14 October.
- Kukutai, T.** 2019. Invited speaker. Panel on digital colonialism, STEM Festival. Toi Ohomai Institute of Technology, Tauranga, 10 September.
- Kukutai, T.** 2019. Invited keynote. Indigenous data sovereignty. Identity conference 2019, Wellington, 26 August.
- Kukutai, T.** 2019. Invited keynote. Panel on Indigenous data sovereignty. AIATSIS National Indigenous Research Conference, Brisbane 1-3 July.
- Kukutai, T.** 2019. Invited keynote. Lowitja Institute international indigenous health conference, Darwin, 18-20 June.
- Kukutai, T.** 2019. Invited keynote. Panel of futurists on people, planet, money and technology. Philanthropy Summit, Wellington, 18 May.
- Kukutai, T.** 2019. From populations to peoples. Hamilton Public Lecture Series, Hamilton, 16 April.
- Kukutai, T.** 2019. Invited keynote. Regional divergence and mana Māori: Reflections from a Māori demographer. New Zealand Planning Institute conference, Napier, 2-5 April.
- Lawrenson, R.** 2019. Keynote Speaker – PC4 Strategy and Conference, Melbourne. How can NZ General Practice help reduce inequities in cancer diagnosis and outcomes? 3-5 April.
- Lawrenson, R.** Keynote Speaker, Rural Health conference, Blenheim, Community Engaged General Practice.
- Lawrenson, R.** 2019. Keynote speaker, GP CME meeting, Christchurch. Cancer and General practice. 9 August

- Lawrenson, R.** 2019. Keynote speaker, Breast cancer research workshop, University of Waikato. Ethnic Differences in biomarkers and outcomes in early stage breast cancer. 22 November
- Paul RG.** *Chewing the fat* – hypertriglycercaemia-induced pancreatitis. The 16th Annual Midlands Regional Endocrinology Meeting, Hamilton, 6th September 2019.
- Poot, J.** (2019) The Wage Curve - A Quarter Century after Blanchflower and Oswald's Book. Invited keynote at a Workshop on the Wage Curve, University of Applied Labour Studies (HdBA), Schwerin, Germany, May 16-17, 2019.
- Prickett, K., Kukutai, T., Atatoa-Carr, P., & Rata, A.** 2019. Family structure and stability and child development during early childhood among tamariki Māori. Population Association of New Zealand conference, Wellington, 21 June.

Other Invited Presentations

- Keenan, R.** (2019) Cultural competence on the wards. Waikato Hospital RMO PGY1 (first year doctors) training 27 August.
- Keenan, R** (2019) Applying for vocational training in general practice: what should I be considering at this stage? Waikato Hospital RMO PGY1 (first year doctors) training 20 February
- Lawrenson, R.**(2019) Oral presentation, Biannual Seminar, Waikato Clinical Campus, UoA, Referral pathways for Waikato colorectal cancer patients, 21 March 2019.
- Lawrenson, R.**(2019) Invited speaker, RACP Congress, Auckland 6-7 May, Rural and Remote Populations and Health Issues
- Lawrenson, R** (2019) Invited speaker, General Practice and Quality Symposium, Dunedin The GP role in Cancer Care, 26-28 July
- Lawrenson, R** (2019) Invited speaker, Community and Public Health Advisory Committee, Taupo 5 August. Rural Health Workforce
- Lawrenson, R.** (2019) Invited speaker, Waikato Cancer Society. What Needs to be done to reduce lung cancer mortality? 7 August
- Lawrenson, R.** (2019) Invited speaker, GP education evening, Gisborne. Equity of lung cancer outcomes for Maori. 2 September
- Lawrenson, R.** (2019) Invited speaker, NZ Lung Cancer Conference, Christchurch, Barriers in accessing health care for Maori patients with lung cancer. 17-18 October.

International Conferences

- Cormack, D., **Kukutai, T.**, Russo Carroll, S. & Walter, M. Indigenous responses to datafication and data colonialism. Data Power 2019 conference, Bremen, 12 – 13 September.
- Kukutai, T.**, Kani, H. & Clark, V. 2019. Building a hapū digital archive: the Ngāti Tiipa whakapapa and whenua project. He Au Honua conference, Maui, 19-22 March.
- Lawrenson, R., Moosa, S., Chepulis, L., Blackmore, T.,** Elwood, M., Firth, M., **Keenan, R.,** Hokowhitu, B., Kidd, J., Stokes, T., Weller, D., Emery, J., (2019) Invited Speaker, Ca-PRI Conference, Toronto. *Pathway to Colorectal diagnosis in the Waikato: How effective is the primary care route?*
- Lawrenson, R., Keenan, R., Kidd, J., Cassim, S., Lao, C.,** Wong, J., Middleton, K. (2018, April) *Improving early access to lung cancer diagnosis for Maori and rural Communities*. E-poster presented at the Ca-PRI 2018 Conference “Building Bridges”,
- Poot, J.** (2019) Valuing cultural diversity of cities. Invited presentation at “CITIES4PEOPLE: Towards Smart, Safe and Sound Cities”, Jheronimus Academy of Data Science (JADS), ‘s-Hertogenbosch, November 19-21, 2019.
- Rarere, M.** (2019, April). He Pikinga Waiora evaluation tool: Guiding the implementation of chronic condition interventions in Māori and other Indigenous communities. Paper presented at the International Conference on Integrated Care, Donostia-San Sebastian, Spain.

National Conferences

- Allen-Scarlett P, Leydon M, **Paul RG,** Tamatea JAU. Inequities in access to insulin pump therapy in Waikato adults with type 1 diabetes. NZSSD Annual Scientific Meeting, Napier, May 10th 2019.
- Atatoa Carr, P.,** Developmental Origins of Health and Disease (DOHaD) World Congress presentation: "He ara ki nga rautaki e ora tonu ai te reo Māori: evidence for retention and revitalisation of indigenous language in Aotearoa/New Zealand. Melbourne, October, 2019
- Atatoa Carr, P.,** - Australasian Epidemiology Association (AEA) Annual Scientific Meeting Brisbane October 2019 presentation: “Real-world Indigenous led RCT of a holistic hospital-based child health programme in Aotearoa/New Zealand”

- Atatoa Carr, P.,** - Population Association of Australia and NZ (PANZ), Wellington, June.
Presentation: "Who was housed first? Early demographic analysis of the Housing First Population in The Peoples Project, Hamilton"
- Atatoa Carr, P.,** NZ College of Public Health Medicine Annual Scientific Meeting (session chair) Sept 20th
- Atatoa Carr, P.,**- 2nd Polynesian Health Corridors Dialogue, Auckland, October Keenan R. (2019) How well are we teaching equity in our audits? A review of general practice training 'Audits of Medical Practice' in Aotearoa/ New Zealand. Leaders In Indigenous Medical Education, LIME Connection VIII. Christchurch 7th November.
- Corbett VM, **Chepulis L, Paul RG.** The clinical workforce caring for young adults with diabetes in New Zealand. NZSSD Annual Scientific Meeting, Napier, May 9th 2019.
- Jarallah, Y.** 2019. Gender Disparities and Psychological Distress among Humanitarian Migrants in Australia: A Moderating Role of Migration Pathway? *Migration, Health and Wellbeing Conference*, The University of Otago, Dunedin, November 2019.
- Kidd, J., Cassim, S., Rolleston, A., Keenan, R., Ngaheu, J. & Lawrenson, R.** (2019, September). Hā Ora: Reflecting on a Kaupapa Māori community engaged co-design approach to lung cancer research. Paper presented at the 2019 Academic General Practice & Primary Care Research Symposium, University of Waikato, Hamilton, New Zealand.
- Kukutai, T. & Rata, A.** 2019. Attitudes towards Māori culture and multiculturalism in the New Zealand General Social Survey. Population Association of New Zealand conference, Wellington, 21 June.
- Kukutai, T. & Yap, M.** 2019. Citizenship, cultural identity and Indigenous political participation in Aotearoa NZ. Arahia He Ara Pathways Conference, Auckland, 20 November.
- Lawrenson, R., Moosa, S., Chepulis, L., Blackmore, T., Elwood, M., Firth, M., . . . Emery, J.** (2019). Pathways to colorectal cancer diagnosis in the Waikato: how effective is the primary care referral route?. In *Cancer Care at a Crossroads*.
- Lawrenson R, Lao C, Brown L, Chepulis L, Cassim S, Rolleston A, Keenan R,** Hokowhitu B, Firth M, Aitken D, Wong J, Middleton K, **Kidd J.** Lung Cancer Outcomes in the Midland Region. Cancer at a Crossroad Conference, Otago University, Wellington, 30-31 January 2019

Lawrenson, R (2019) Oral presentation and host, GP Research and Primary Care weekend, University of Waikato. Should we use FIT in symptomatic patients at risk of CRC. 20-22 September.

Rarere, M. (2019, June). Exploring socio-cultural influences on Māori fertility: Does ‘cultural identity’ make a difference? Poster presented at the Population Association of New Zealand Conference, Wellington, New Zealand.

Poster Presentations

Bennett G, **Chepulis L, Paul RG.** Glycaemic monitoring and control in inpatients with diabetes in Waikato Hospital is suboptimal. NZSSD Annual Scientific Meeting, Napier, May 8th – 10th 2019.

Blackmore, T, del Mundo-Ramos, E, Ryan, B, Chepulis, L, Lao, C, Burrett, V, McCleery, J, and Lawrenson, R. (2019, September). Characteristics and Psychosocial Referral Reasons of Breast, Lung and Colorectal Cancer Patients in the Waikato Region of New Zealand, 21st World Congress of Psycho-oncology, Banff, Alberta, Canada.

Chepulis L, Mayo C, Moosa S, Warren J, Paul RG, Blackmore T, Lawrenson R. Effect of diabetes on the incidence, presentation and referral of colorectal cancer in the Waikato. NZSSD Annual Scientific Meeting, Napier, May 8th – 10th 2019.

Lawrenson, R., Lao, C., Brown, L., Chepulis, L., Cassim, S.....Kidd, J. (2019, January). Review of the Midland Lung Cancer Register. Poster presented at the Cancer Care at a Crossroads Conference, University of Otago, Wellington, New Zealand.

Mayo M, **Chepulis L, Paul RG.** Prediction of hypoglycaemia using machine learning in patients with type 1 diabetes using closed-loop systems. NZSSD Annual Scientific Meeting, Napier, May 8th – 10th 2019.

Zhang X, Wilde L, Calder G, **Paul RG.** Steroid-induced hyperglycaemia is likely an under-recognised complication in inpatients. NZSSD Annual Scientific Meeting, Napier, May 8th – 10th 2019.

Publications and Research Output

Peer reviewed Journal Articles

- Atatoa Carr, P.**, Reese, E., Bird, A. L., Bandara, D. K., Grant, C. C., & Morton, S. M. B. (2019). Caring for our infants: parents' antenatal childcare intentions and nine-month reality. *Early Years*, 39(1), 17-35. doi:10.1080/09575146.2017.1323186
- Cameron MC and **Poot J** (2019) Towards Superdiverse Aotearoa: Dimensions of Past and Future Ethnic Diversity in New Zealand and its Regions. *New Zealand Population Review*, 45: 18-45.
- Cameron MP and **Poot J** (2019) The Estimation and Interpretation of Coefficients in Panel Gravity Models of Migration. *Letters in Spatial and Resource Sciences*, 12(1): 9-15.
- Cassim S, Chepulis L, Keenan R**, Kidd J, Firth M, **Lawrenson R**. Patient and carer perceived barriers to early presentation and diagnosis of lung cancer: a systematic review. *BMC Cancer*. 2019 Jan 8;19(1):25. doi: 10.1186/s12885-018-5169-9.
- Cassim, S.**, Hodgetts, D., & Stolte, O. (2019). Hybrid identities and interconnected spacialities: The role of cricket in the settlement of Sri Lankan migrants in New Zealand. *Community Psychology in Global Perspective*, 5, 30-45. Retrieved from <http://siba-esu.unisalento.it/index.php/cpgp/article/view/20577/17751>
- Cassim, S.**, Stolte, O. & Hodgetts, D. (2019). Migrants straddling the 'here' and 'there': Explorations of habitus and hybrid identities among Sri Lankan migrants in New Zealand, *Journal of Community & Applied Social Psychology*. doi: <https://doi.org/10.1002/casp.2436>.
- Chepulis L, Ryan B, Blackmore T**, Burrett V, McCleery J, **Lawrenson R**. Characteristics of lung cancer patients receiving psychosocial support in urban New Zealand. *Psycho-oncology*. 2019 Jul;28(7):1588-1590. doi: 10.1002/pon.5137.
- Chepulis, L.**, Everson, N., Ndanuko, R., & Mearns, G. (2019). The nutritional content of children's breakfast cereals: A cross-sectional analysis of New Zealand, Australia, the UK, Canada and the USA. *Public Health Nutrition*. doi:[10.1017/S1368980019003537](https://doi.org/10.1017/S1368980019003537)
- Chepulis, L.**, Everson, N., Wu, JHY, Mearns, G. (2019) The effects of promotional content on the nutritional quality of children's breakfast cereals from Australia, New Zealand, the United Kingdom, Canada and the United States. *Proceedings*, 8(1), 4. doi.org/10.3390/proceedings8010004

- Collins, F.L.** (2019) Anxious Desires: Temporary status and future prospects in migrant lives. *Emotion, Space and Society*, 31, 162-169.
- Collins, F.L.** (2019) Commentary: Questioning the Diversity Dividend, and then Moving on. *New Zealand Population Review*, 45: 7-17.
- Cormack, D., Reid, P., & **Kukutai, T.** (2019). Indigenous data and health: critical approaches to 'race'/ethnicity and Indigenous data governance. *Public Health*, 1-3.
doi:[10.1016/j.puhe.2019.03.026](https://doi.org/10.1016/j.puhe.2019.03.026)
- Hobbs, M. R., **Atatoa Carr, P.**, Fa'alili-Fidow, J., Pillai, A., Morton, S. M. B., & Grant, C. C. (2019). How differing methods of ascribing ethnicity and socio-economic status affect risk estimates for hospitalisation with infectious disease. *Epidemiology & Infection*, 147, 1-9.
- Jarallah, Y.**, & Baxter, J. (2019). Gender disparities and psychological distress among humanitarian migrants in Australia: A moderating role of migration pathway?. *Conflict and Health*, 13(1). doi:[10.1186/s13031-019-0196-y](https://doi.org/10.1186/s13031-019-0196-y)
- Jarallah, Y.**, & Hogan, D. (2019). Marriage and fertility under military occupation: A study of the west bank of Palestine. *Journal of Population and Social Studies*, 27(1), 87-105.
doi:[10.25133/JPSSV27N1.006](https://doi.org/10.25133/JPSSV27N1.006)
- Johnson, C., Baker, T., & **Collins, F. L.** (2019). Imaginations of post-suburbia: Suburban change and imaginative practices in Auckland, New Zealand. *Urban Studies*, 56(5), 1042-1060.
- Kidd, J., **Cassim, S.**, **Rolleston, A.**, & **Keenan, R.** (2019). Co-opting or valuing the indigenous voice through translation? A decision for research teams. *The Ethnographic Edge*, 3, 53. doi:[10.15663/tee.v3i1.52](https://doi.org/10.15663/tee.v3i1.52)
- Kukutai, T.**, & Cormack, D. (2019). Mana motuhake ā-raraunga: datafication and social science research in Aotearoa. *Kotuitui*. doi:[10.1080/1177083X.2019.1648304](https://doi.org/10.1080/1177083X.2019.1648304)
- Lao C, Lawrenson R**, Edwards M, Campbell I. Treatment and survival of Asian women diagnosed with breast cancer in New Zealand. *Breast Cancer Res Treat*. 2019 Sep;177(2):497-505. doi: 10.1007/s10549-019-05310-z.
- Lao C, Lees D, Patel S, White D, Lawrenson R.** Geographical and ethnic differences of osteoarthritis-associated hip and knee replacement surgeries in New Zealand: a

population-based cross-sectional study. *BMJ Open*. 2019 Sep 20;9(9):e032993. doi: 10.1136/bmjopen-2019-032993.

Lao C, Lees D, Patel S, White D, **Lawrenson R**. Length of hospital stay for osteoarthritic primary hip and knee replacement surgeries in New Zealand. *Int J Environ Res Public Health*. 2019 Nov 29;16(23). pii: E4789. doi: 10.3390/ijerph16234789.

Lawrenson R, **Lao C**, Ali A, Campbell I. Impact of radiotherapy on cardiovascular health of women with breast cancer. *J Med Imaging Radiat Oncol*. 2019 Apr;63(2):250-256. doi: 10.1111/1754-9485.12838.

Lawrenson R, Lao C, Jacobson G, Seneviratne S, Scott N, Sarfati D, Elwood M, Campbell I. Outcomes in different ethnic groups of New Zealand patients with screen-detected vs. non-screen-detected breast cancer. *J Med Screen*. 2019 May 8:969141319844801. doi: 10.1177/0969141319844801.

Lim, WXJ., von Hurst, P., Gammon, C., **Chepulis, L.**, Page, R. (2019) A dose response study to assess the effects of New Zealand Pine Bark extract on glycaemic responses in healthy participants. *Proceedings*, 8(1), 52;
<https://doi.org/10.3390/proceedings2019008052>

Ly, K., Walker, C., Berry, S., Snell, R., Marks, E., Thayer, Z., **Atatoa Carr, P.**, Morton, S. (2019). Telomere length in early childhood is associated with sex and ethnicity. *Scientific Reports*, 9(1). doi:10.1038/s41598-019-46338-x

Maré DC and **Poot J** (2019) Commuting to Diversity. *New Zealand Population Review*, 45: 125-159.

Masters-Awatere, B., **Rarere, M.**, Gilbert, R., Manuel, C., & Scott, N. (2019). He aha te mea nui o te ao ? He tāngata!. *Australian Journal of Primary Health*, 25, 435-442.
<https://doi.org/10.1071/PY19027>

Mayo, M., **Chepulis, L.**, & **Paul, R. G.** (2019). Glycemic-aware metrics and oversampling techniques for predicting blood glucose levels using machine learning. *PLOS ONE*, 14(12), e0225613. doi:[10.1371/journal.pone.0225613](https://doi.org/10.1371/journal.pone.0225613)

- McClintock JM, Fraser SK, Joseph P, Corbett VM, **Paul RG**. Do clinic-based interventions make a difference to the psychological wellbeing of youth and young adults with type 1 diabetes? *Pediatric diabetes* 2019; 20(S28):54.
- Millar E, Gurney J, Stanley J, Stairmand J, Davies C, Semper K, Dowell A, **Lawrenson R**, Mangin D, Sarfati D. Pill for this and a pill for that: A cross-sectional survey of use and understanding of medication among adults with multimorbidity. *Australas J Ageing*. 2019 Jun;38(2):91-97. doi: 10.1111/ajag.12606.
- Nathan, K., Robertson, O., **Atatoa Carr, P.**, Howden-Chapman, P., & Pierse, N. (2019). Residential mobility and socioemotional and behavioural difficulties in a preschool population cohort of New Zealand children. *Journal of Epidemiology and Community Health*. doi:10.1136/jech-2019-212436
- Nixon G, Blattner K, Finnie W, **Lawrenson R**, Kerse N. Use of point-of-care ultrasound for the assessment of intravascular volume in five rural New Zealand hospitals. *Can J Rural Med*. 2019 Oct-Dec;24(4):109-114.
- Nixon G, **Lawrenson R**. Guest Editorial: Failing to thrive: academic rural health in New Zealand. *J Prim Health Care*. 2019 Apr;11(1):4-5. doi: 10.1071/HCv11n1_ED2.
- Oetzel, J. G., **Lao, C.**, Morley, M., Penman, K., Child, M., Scott, N., & Karalus, M. (2019). Efficacy of an incentive intervention on secondary prophylaxis for young people with rheumatic fever: a multiple baseline study. *BMC Public Health*, 19(1), 11 pages. doi:[10.1186/s12889-019-6695-3](https://doi.org/10.1186/s12889-019-6695-3)
- Oetzel, J., **Rarere, M.**, Wihapi, R., Manuel, C., & Tapsell, J. (in submission Dec 2019). Twelve-week lifestyle intervention to reduce weight in Māori men at risk of diabetes, cardiovascular disease and obesity: A case study. *International Journal for Equity in Health*.
- Paul RG**, Henneby AS, Elston MS, Conaglen JV, McMahon C. Regulation of murine skeletal muscle growth by STAT5B is age- and sex-specific. *Skeletal Muscle* 2019; 9(1):19; DOI:10.1186/s13395-019-0204-3.
- Paul, R.**, Muruges, C., **Chepulis, L.**, Tamatea, J., & Wolmarans, L. (2019). Should antenatal corticosteroids be considered in women with gestational diabetes before planned late gestation caesarean section. *Australian and New Zealand Journal of Obstetrics and Gynaecology*, 59(3), 463-466. doi:[10.1111/ajo.12963](https://doi.org/10.1111/ajo.12963)

- Pierse, N., Ombler, J., White, M., Aspinall, C., McMinn, C., **Atatoa-Carr, P.**, . . . Howden-Chapman, P. (2019). Service usage by a New Zealand Housing First cohort prior to being housed. *SSM - Population Health*, 8, 1-10.
- Rarere, M.**, Oetzel, J., Masters-Awatere, B., Scott, N., Wihapi, R., Manuel, C., & Gilbert, R. (2019). The He Pikinga Waiora process evaluation tool guiding implementation of chronic condition interventions in Maori and other Indigenous communities. *International Journal of Integrated Care*, 19, 448. <http://doi.org/10.5334/ijic.s3448>
- Rarere, M.**, Oetzel, J., Masters-Awatere, B., Scott, N., Wihapi, R., Manuel, C., & Gilbert, R. (2019). Critical reflection for researcher–community partnership effectiveness: The He Pikinga Waiora process evaluation tool guiding the implementation of chronic condition interventions in Indigenous communities. *Australian Journal of Primary Health*, 25, 478-485. <https://doi.org/10.1071/PY19022>
- Rata, A., & Al-Asaad, F.** (2019). Whakawhanaungatanga as a Māori Approach to Indigenous–Settler of Colour Relationship Building. *New Zealand Population Review*, 45, 211-233.
- Rowe N, Keenan R,** Lack L, Malloy N, Strasser R, **Lawrenson R.** Community engagement in general practice: a qualitative study. *Journal of Primary Health Care* 11(2) 146-151 <https://doi.org/10.1071/HC18092>
- Ruru, J., Nikora, L., McIntosh, T., **Kukutai, T.**, & Patrick, D. 2019. Whāia ngā pae o te māramatanga: our horizons of pursuit. *New Zealand Science Review* 75(4), 74–79.
- Thayer, Z., Bécares, L., & **Atatoa Carr, P.** (2019). Maternal experiences of ethnic discrimination and subsequent birth outcomes in Aotearoa New Zealand. *BMC Public Health*, 19(1). doi:10.1186/s12889-019-7598-z
- Tran NTM, Cameron MC and **Poot J** (2019) What are Migrants Willing to Pay for Better Home Country Institutions? *Letters in Spatial and Resource Sciences*, 12(3): 257-268.
- Tran NTM, Cameron MP and **Poot J** (2019) Local Institutional Quality and Return Migration: Evidence from Viet Nam. *International Migration*, 57(4):75-90.
- Vaughan, C., **Jarallah, Y.**, Murdolo, A., Murray, L., Quiazon, R., Block, K., & Zannettino, L. (2019). The MuSeS project: A mixed methods study to increase understanding of the role of settlement and multicultural services in supporting migrant and refugee

women experiencing violence in Australia. *BMC International Health and Human Rights*, 19(1). doi:[10.1186/s12914-018-0184-0](https://doi.org/10.1186/s12914-018-0184-0)

Wallander, J. L., Berry, S., **Atatoa Carr, P.**, Peterson, E. R., Waldie, K. E., Marks, E., . . . Morton, S. M. B. (2019). Patterns of exposure to cumulative risk through age 2 and associations with problem behaviors at age 4.5: Evidence from Growing Up in New Zealand. *Journal of Abnormal Child Psychology*, -online, 1-12. doi:10.1007/s10802-019-00521-w

White D, **Lao C**, Williams M, **Lawrenson R**, Dalbeth N. The costs associated with ankylosing spondylitis/axial spondyloarthritis in Aotearoa/New Zealand. *N Z Med J*. 2019 Nov 8;132(1505):10-19.

Whitehead J, L Pearson A, **Lawrenson R**, Atatoa-Carr P. How can the spatial equity of health services be defined and measured? A systematic review of spatial equity definitions and methods. *J Health Serv Res Policy*. 2019 Oct;24(4):270-278. doi: 10.1177/1355819619837292.

Whitehead J, Pearson AL, **Lawrenson R**, Atatoa-Carr P. Spatial equity and realised access to healthcare - a geospatial analysis of general practitioner enrolments in Waikato, New Zealand. *Rural Remote Health*. 2019 Oct;19(4):5349. doi: 10.22605/RRH5349. Epub 2019 Oct 18

Whitehead, J., Pearson, A. L., Lawrenson, R., & **Atatoa-Carr, P.** (2019). Spatial equity and realised access to healthcare - a geospatial analysis of general practitioner enrolments in Waikato, New Zealand. *Rural and Remote Health*, 19(4), 5349. doi:10.22605/RRH5349

Books

Collins, F. & Carling, J. (2019). *Aspirations, Desires and the Drivers of Migration*. London: Routledge.

Simon-Kumar, R., **Collins, F.** & Friesen, W. (2019). *Intersections of Inequality, Migration and Diversification: The Politics of Mobility in Aotearoa/New Zealand* (pp. 65-86). Switzerland: Palgrave Pivot.

Book chapters

- Alimi OB**, Maré DC and **Poot J** (2019) Modelling inter-urban migration in an open population setting – the case of New Zealand. In: R. Franklin (ed.) *Population, Place, and Spatial Interaction*. New York & Berlin: Springer Verlag, Chapter 11, pp. 201-223.
- Cochrane W and **Poot J** (2019) Demand-driven theories and models of regional growth. In: M Fischer and P Nijkamp (eds) *Handbook of Regional Science* (2nd edition). Springer, Berlin, Heidelberg.
- Collins, F.L.** (2019). Legislated inequality: Provisional migration and the stratification of migrant lives. In R. Simon-Kumar, F. L. Collins, & W. Friesen (Eds.), *Intersections of Inequality, Migration and Diversification: The Politics of Mobility in Aotearoa/New Zealand* (pp. 65-86). Switzerland: Palgrave Pivot.
- Collins, F.L.**, Simon-Kumar, R. & Friesen, W. (2019). Introduction: The Intersections of Inequality, Migration and Diversification. In R. Simon-Kumar, F. L. Collins, & W. Friesen (Eds.), *Intersections of Inequality, Migration and Diversification: The Politics of Mobility in Aotearoa/New Zealand* (pp. 1-15). Switzerland: Palgrave Pivot.
- Collins, F.L.** (2019). Urban Mosaic. In, Orum, A. M., García, M., Judd, D. R., Pow, C. P., & Roberts, B. R. (Eds.). (2019). *The Wiley-Blackwell Encyclopedia of Urban and Regional Studies*. Wiley Blackwell.
- Collins, F.L.** (2019). Urban Mobility. In, Orum, A. M., García, M., Judd, D. R., Pow, C. P., & Roberts, B. R. (Eds.). (2019). *The Wiley-Blackwell Encyclopedia of Urban and Regional Studies*. Wiley Blackwell.
- Collins, F.L.** (2019). Transnational Urbanism. In, Orum, A. M., García, M., Judd, D. R., Pow, C. P., & Roberts, B. R. (Eds.). (2019). *The Wiley-Blackwell Encyclopedia of Urban and Regional Studies*. Wiley Blackwell.
- Jackson, N. & **Kukutai, T.** 2019. Population-level analysis. In M. Walter (ed), *Social Research Methods* (pp. 177-210). Oxford: Oxford University Press.
- Jarallah, Y.**, Hogan, D. (In Press). Conflict and Fertility in the Occupied Palestinian Territories in *Donald J Bogue Volume Festschrift*.

Lovett, R., Lee, V., **Kukutai, T.**, Cormack, D., Rainie, S. C., & Walker, J. (2019). Good data practices for indigenous data sovereignty and governance. In A. Daly, S. K. Devitt, & M. Mann (Eds.), *Good Data* (pp. 26-36). Amsterdam: Institute of Network Cultures.

Rainie, S. C., **Kukutai, T.**, Walter, M., Figueroa-Rodríguez, O. L., Walker, J., & Axelsson, P. (2019). Indigenous data sovereignty. In T. Davies, S. B. Walker, M. Rubinstein, & F. Perini (Eds.), *The State of Open Data: Histories and Horizons* (pp. 300-319). Cape Town and Ottawa: African Minds and the International Development Research Centre (IDRC). Retrieved from

<https://www.stateofopendata.od4d.net/chapters/issues/indigenous-data.html>

Ryks, J., Simmonds, N., & **Whitehead, J.** (2019). Cities and indigenous communities: The health and wellbeing of urban maori in Aotearoa New Zealand. In *Handbook of Global Urban Health* (pp. 283-296). doi:[10.4324/9781315465456-18](https://doi.org/10.4324/9781315465456-18)

Technical and commissioned research reports

Chepulis, L., lim, J., von Hurst, P., Gammon, C., & Page, R. (2019). *The Effects of Rooibos Tea Extract on Glycemic Control in Patients with Prediabetes: Final Report: July 19 2019: The Effects of Rooibos Tea Extract on Glycemic Control in Patients with Prediabetes: Final Report: July 19 2019.*

Collins, F. and Stringer, C. (2019). *Temporary Migrant Worker Exploitation in New Zealand*. Wellington: Ministry of Business, Innovation and Employment.

Lim, W., Page, R., von Hurst, P., & **Chepulis, L.** (2019). *A dose-response study to assess the effects of pine bark extract (Enzogenol™) on glycaemic (blood sugar) response in healthy participants*. unpublished, confidential report.

Working Papers

Maré DC and **Poot J** (2019) *Valuing Cultural Diversity of Cities*. Working Paper 19/05, Motu Economic and Public Policy Research, Wellington.

Mondal M, Cameron MP and **Poot J** (2019) *Economic and Cultural Residential Sorting of Auckland's Population 1991-2013: An Entropy Approach*. Working Papers in Economics 3/19, University of Waikato.

Media Interviews and Citations

Arama Rata

Waikato academic calls Endeavour a death ship, Stuff NZ, 27 September 2019
<https://www.stuff.co.nz/national/politics/116155732/waikato-academic-calls-endeavour-a-death-ship>

TVNZ, Marae, 22 September 2019
<https://www.tvnz.co.nz/shows/marae/episodes/s2019-e31>
How should New Zealand remember Captain Cook's Legacy, Newshub, 6 October 2019
<https://www.newshub.co.nz/home/shows/2019/10/how-should-new-zealand-remember-captain-cook-s-legacy.html>

Bungled NZ census highlights need for multiple voting options, The conversation, 21 August 2019
<https://theconversation.com/bungled-nz-census-highlights-need-for-multiple-voting-options-to-raise-maori-participation-121831>

Polly Atatoa Carr

Polly Atatoa Carr on Census 2018, 95B FM, 14 August 2019
<http://95bfm.com/bcast/i-v-w-polly-atatoa-carr-on-census-2018-august-14-2019>

Francis Collins

Employers use immigration rules as 'leverage' over migrant workers. Stuff National News. 03 December 2019.

<https://www.stuff.co.nz/auckland/117860988/employers-use-immigration-rules-as-leverage-over-migrant-workers>

New Zealand's "Paradise" Dream Wake Up? Reflections on "Immigration Paradise" after the tragedy. BBC Asia. 21 March 2019.

Tahu Kukutai

Census 2018: Stats NZ failed to meet treaty obligations to iwi. Te Karere, 23 September 2019.

<https://www.youtube.com/watch?v=EL7lfoVtkus>

Māori have no measure of success following botched census. Radio NZ, 24 September 2019.

Census 2018 and implications for Māori. Radio Waatea, 24 September 2019.

<https://www.rnz.co.nz/news/te-manu-korihi/399473/maori-have-no-measure-of-success-following-botched-census>

Census 2018 and iwi data. Radio Waatea, 1 May 2019.

Stats NZ is refusing to release data on Māori iwi and that's a problem. The Spinoff, 1 May 2019.

<https://thespinoff.co.nz/atea/01-05-2019/stats-nz-is-refusing-to-release-data-on-maori-iwi-and-thats-a-problem/>

Māori electorate seat at risk due to Census 2018 debacle. Stuff. 5 March 2019.

<https://www.stuff.co.nz/national/111003171/mori-electorate-seat-at-risk-due-to-census-2018-debacle>

2018 census and the Māori electoral seats. Radio Waatea, 7 March 2019.

Rawiri Keenan

RNZCGP – GP Pulse magazine

https://www.rnzcgp.org.nz/GPPulse/College_news/2019/Research%20role%20for%20outgoing%20Pou%20Whirinaki.aspx

Ryan Paul

Dr Ryan Paul takes out New Zealand Clinical Educator of the Year, Waikato DhB Newsroom
12 November 2019

<https://www.waikatodhbnewsroom.co.nz/2019/11/12/dr-ryan-paul-takes-out-new-zealand-clinical-educator-of-the-year/>

Ross Lawrenson

Kudos Awards names finalists for 2019

<https://www.waikatodhbnewsroom.co.nz/2019/07/19/kudos-awards-names-finalists-for-2019/>

Rural communities advise researchers on diagnosing lung cancer early, initially targeting
Māori, published 14:53 23/10/2019

<https://www.nzdoctor.co.nz/article/print-archive/rural-communities-advise-researchers-diagnosing-lung-cancer-early-initially>

Waikato Uni reopens rural medical school debate, cites health crisis

From NZ Doctor (subscription based publication), published 18:11 10/12/2019

<https://www.nzdoctor.co.nz/article/news/waikato-uni-reopens-rural-medical-school-debate-cites-health-crisis>

Ross Lawrenson and Chunhuan Lao

Advisory: NZ Medical Journal #1506 includes Maori cancer equity by 2030 report

<https://news.fuseworksmmedia.com/522ab899-dca8-45d1-a24a-f61e46801e49>

*NIDEA staff and members gratefully acknowledge the work of
Sheree Findon (Administrator) in collating and preparing this report*